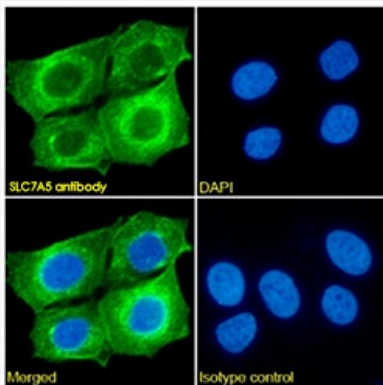


RecomAb™

SLC7A5 recombinant monoclonal antibody, clone EP3-1

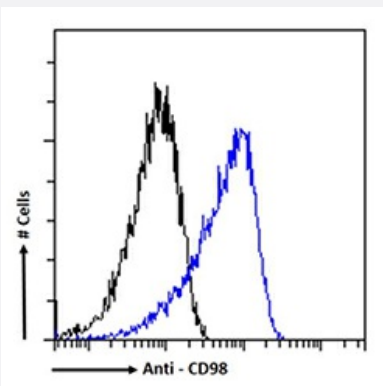
Catalog # RAB01151 Size 200 ug

Applications



Immunofluorescence

Immunofluorescence analysis of paraformaldehyde fixed MCF7 cells stained with the chimeric rabbit IgG version of EP3-1 at 10 ug/mL for 1h followed by Alexa Fluor 488 secondary antibody (2 ug/mL), showing membrane staining. The nuclear stain is DAPI (blue). Panels show from left-right, top-bottom, DAPI, merged channels and an isotype control. The isotype control was an unknown specificity antibody followed by staining with Alexa Fluor 488 secondary antibody.



Flow Cytometry

Flow-cytometry were stained with anti-unknown specificity antibody (black line) or the rabbit IgG version of EP3-1 (blue line) at a dilution of 1:100 for 1h at RT. After washing, the bound antibody was detected using a goat anti-rabbit IgG AlexaFluor 488 antibody at a dilution of 1:1000 and cells analyzed using a FACSCanto flow-cytometer.

Specification

Product Description	Mouse recombinant monoclonal antibody raised against human CD98.
Antibody Species	Mouse
Immunogen	Original antibody is raised against immunised mice and constructed IgG1 Fab phage display libraries from the spleen cells. CD98-reactive recombinant Fab fragments were retrieved by epitope peptide panning.
Reactivity	Human

Specificity	Shown to bind to epitopes of sequences; LLHGDFHAFSAG-GGGC-NH ₂ , LLHGDFH-GGGC-HN ₂ , and FAFSAG-GGGC-NH ₂ , but showed no reactivity to live HeLa cells by IF.
Form	Liquid
Purification	Protein A affinity purification
Isotype	IgG1, Kappa
Recommend Usage	Flow cytometry Immunofluorescence The optimal working dilution should be determined by the end user.
Storage Buffer	In PBS with 0.02% Proclin 300
Storage Instruction	Store at 4°C for up to 3 months. For longer storage, aliquot and store at -20°C.

Applications

- Immunofluorescence

Immunofluorescence analysis of paraformaldehyde fixed MCF7 cells stained with the chimeric rabbit IgG version of EP3-1 at 10 ug/mL for 1h followed by Alexa Fluor 488 secondary antibody (2 ug/mL), showing membrane staining. The nuclear stain is DAPI (blue). Panels show from left-right, top-bottom, DAPI, merged channels and an isotype control. The isotype control was an unknown specificity antibody followed by staining with Alexa Fluor 488 secondary antibody.

- Flow Cytometry

Flow-cytometry were stained with anti-unknown specificity antibody (black line) or the rabbit IgG version of EP3-1 (blue line) at a dilution of 1:100 for 1h at RT. After washing, the bound antibody was detected using a goat anti-rabbit IgG AlexaFluor 488 antibody at a dilution of 1:1000 and cells analyzed using a FACSCanto flow-cytometer.

Gene Info — SLC7A5

Entrez GeneID	8140
Protein Accession#	Q01650
Gene Name	SLC7A5
Gene Alias	4F2LC, CD98, D16S469E, E16, LAT1, MPE16, hLAT1
Gene Description	solute carrier family 7 (cationic amino acid transporter, y ⁺ system), member 5
Omim ID	600182
Gene Ontology	Hyperlink

Gene Summary

y+ system)

Other Designations

4F2 light chain|CD98 light chain|L-type amino acid transporter 1|integral membrane protein E16|large neutral amino acids transporter 1|large neutral amino acids transporter small subunit 1|sodium-independent neutral amino acid transporter LAT1

Disease

- [Autistic Disorder](#)
- [Genetic Predisposition to Disease](#)
- [Kidney Failure](#)
- [Lymphoma](#)
- [Multiple Myeloma](#)