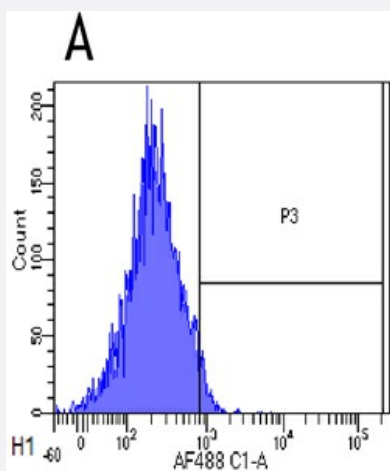


RecomAb™

MS4A1 recombinant monoclonal antibody, clone 10F381 (Rituximab)

Catalog # RAB01134 Size 200 ug

Applications



Flow Cytometry

Flow-cytometry were stained with an isotype control at a concentration of 1 ug/mL for 30 mins at RT. After washing, bound antibody was detected using a AF488 conjugated donkey anti-rabbit antibody and cells analysed on a FACSCanto flow-cytometer.

Specification

Product Description	Mouse recombinant monoclonal antibody raised against human CD20.
Antibody Species	Mouse
Immunogen	Original antibody is raised against human lymphoblastoid cell line SB.
Reactivity	Human
Specificity	CD20 (Human B-lymphocyte-restricted differentiation antigen, Bp35), is a hydrophobic transmembrane protein with a molecular weight of approximately 35 kDa located on pre-B and mature B lymphocytes, and most B-cell non-Hodgkin's lymphomas, but is not found on stem cells, pro-B cells, normal plasma cells or other normal tissues.
Form	Liquid
Purification	Protein A affinity purification

Isotype	IgG2a, Kappa
Recommend Usage	Flow cytometry The optimal working dilution should be determined by the end user.
Storage Buffer	In PBS with 0.02% Proclin 300
Storage Instruction	Store at 4°C for up to 3 months. For longer storage, aliquot and store at -20°C.

Applications

- Flow Cytometry

Flow-cytometry were stained with an isotype control at a concentration of 1 ug/mL for 30 mins at RT. After washing, bound antibody was detected using a AF488 conjugated donkey anti-rabbit antibody and cells analysed on a FACSCanto flow-cytometer.

Gene Info — MS4A1

Entrez GeneID	931
Protein Accession#	P11836
Gene Name	MS4A1
Gene Alias	B1, Bp35, CD20, LEU-16, MGC3969, MS4A2, S7
Gene Description	membrane-spanning 4-domains, subfamily A, member 1
Omim ID	112210
Gene Ontology	Hyperlink
Gene Summary	This gene encodes a member of the membrane-spanning 4A gene family. Members of this nascent protein family are characterized by common structural features and similar intron/exon splice boundaries and display unique expression patterns among hematopoietic cells and nonlymphoid tissues. This gene encodes a B-lymphocyte surface molecule which plays a role in the development and differentiation of B-cells into plasma cells. This family member is localized to 11q12, among a cluster of family members. Alternative splicing of this gene results in two transcript variants which encode the same protein. [provided by RefSeq]
Other Designations	B-lymphocyte cell-surface antigen B1 CD20 antigen CD20 receptor

Pathway

- [Hematopoietic cell lineage](#)

Disease

- [Breast cancer](#)
- [Breast Neoplasms](#)
- [Genetic Predisposition to Disease](#)
- [Lymphoma](#)
- [Neoplasm Recurrence](#)
- [Ovarian cancer](#)