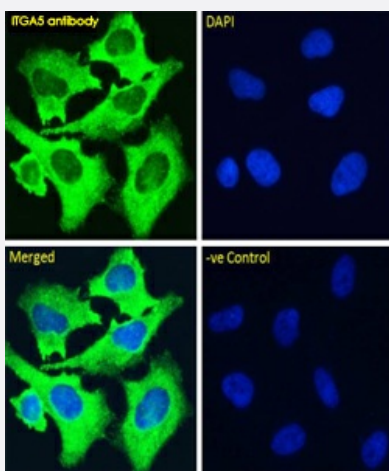


RecomAb™

ITGA5/ITGB1 recombinant monoclonal antibody, clone M200 (Volociximab)

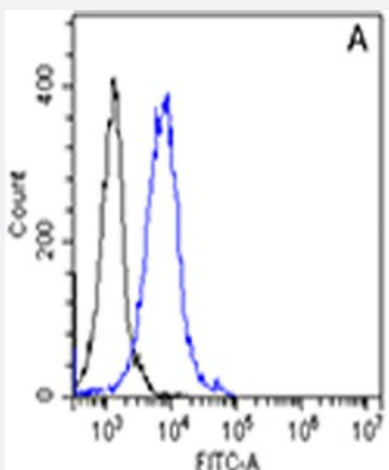
Catalog # RAB01128 Size 200 ug

Applications



Immunofluorescence

Immunofluorescence analysis of paraformaldehyde fixed HeLa cells, permeabilized with 0.15% Triton stained with the chimeric rabbit IgG version of M200 at 10 ug/mL for 1h followed by Alexa Fluor 488 secondary antibody (1 ug/mL), showing cytoplasmic and membrane staining. The nuclear stain is DAPI (blue). Panels show from left-right, top-bottom, DAPI, merged channels and a negative control. The negative control was stained with unimmunized rabbit IgG followed by Alexa Fluor 488 secondary antibody.



Flow Cytometry

Flow cytometry analysis of PBMC's were stained with unimmunized rabbit IgG antibody (black line) at a concentration of 10 ug/mL for 30 mins at RT. After washing, bound antibody was detected using anti-rabbit IgG JK (FITC-conjugate) antibody at 2 ug/mL and cells analyzed on a FACSCanto flow-cytometer.

Specification

Product Description Mouse recombinant monoclonal antibody raised against human alpha 5 beta 1 integrin.

Antibody Species Mouse

Immunogen	Original antibody is raised against heterodimeric $\alpha 5 \beta 1$ Fc fusion protein
Reactivity	Human
Specificity	The antibody binds to human $\alpha 5 \beta 1$ integrin with a Kd of 0.367 nM (determined by Biacore)
Form	Liquid
Purification	Protein A affinity purification
Isotype	IgG1, Kappa
Recommend Usage	Flow cytometry Immunohistochemistry The optimal working dilution should be determined by the end user.
Storage Buffer	In PBS with 0.02% Proclin 300
Storage Instruction	Store at 4°C for up to 3 months. For longer storage, aliquot and store at -20°C.

Applications

- Immunofluorescence

Immunofluorescence analysis of paraformaldehyde fixed HeLa cells, permeabilized with 0.15% Triton stained with the chimeric rabbit IgG version of M200 at 10 ug/mL for 1h followed by Alexa Fluor 488 secondary antibody (1 ug/mL), showing cytoplasmic and membrane staining. The nuclear stain is DAPI (blue). Panels show from left-right, top-bottom, DAPI, merged channels and a negative control. The negative control was stained with unimmunized rabbit IgG followed by Alexa Fluor 488 secondary antibody.

- Flow Cytometry

Flow cytometry analysis of PBMC's were stained with unimmunized rabbit IgG antibody (black line) at a concentration of 10 ug/mL for 30 mins at RT. After washing, bound antibody was detected using anti-rabbit IgG JK (FITC-conjugate) antibody at 2 ug/mL and cells analyzed on a FACSCanto flow-cytometer.

Gene Info — ITGA5

Entrez GeneID	3678
Protein Accession#	P08648
Gene Name	ITGA5
Gene Alias	CD49e, FNRA, VLA5A
Gene Description	integrin, alpha 5 (fibronectin receptor, alpha polypeptide)
Omim ID	135620

Gene Ontology

[Hyperlink](#)

Gene Summary

The product of this gene belongs to the integrin alpha chain family. Integrins are heterodimeric integral membrane proteins composed of an alpha chain and a beta chain. This gene encodes the integrin alpha 5 chain. Alpha chain 5 undergoes post-translational cleavage in the extracellular domain to yield disulfide-linked light and heavy chains that join with beta 1 to form a fibronectin receptor. In addition to adhesion, integrins are known to participate in cell-surface mediated signalling. [provided by RefSeq]

Other Designations

fibronectin receptor, alpha subunit|integrin alpha 5|very late activation protein 5, alpha subunit

Pathway

- [Arrhythmogenic right ventricular cardiomyopathy \(ARVC\)](#)
- [ECM-receptor interaction](#)
- [Focal adhesion](#)
- [Hematopoietic cell lineage](#)
- [Hypertrophic cardiomyopathy \(HCM\)](#)
- [Regulation of actin cytoskeleton](#)

Disease

- [Tobacco Use Disorder](#)