

SARS-CoV-2

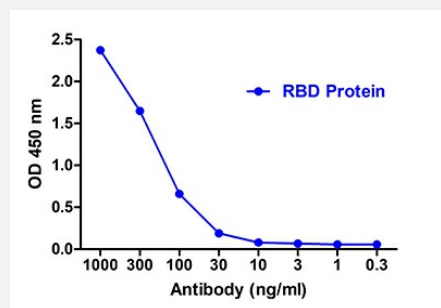
RecomAb™

# SARS-CoV-2 S RBD recombinant monoclonal antibody, clone T5P7-G12

Catalog # RAB01101

Size 100 ug

## Applications



## Enzyme-linked Immunoabsorbent Assay

## Specification

<b>Product Description</b>	Llama recombinant monoclonal antibody raised against a partial recombinant SARS-CoV-2 S protein RBD.
<b>Antibody Species</b>	Camelid
<b>Immunogen</b>	The protein corresponds to amino acids 319 - 537 at C-terminus in HEK293 cells.
<b>Reactivity</b>	SARS-CoV-2
<b>Form</b>	Liquid
<b>Purification</b>	Affinity chromatography
<b>Recommend Usage</b>	ELISA The optimal working dilution should be determined by the end user.
<b>Storage Instruction</b>	Store at -20°C. Aliquot to avoid repeated freezing and thawing.

**Note**

It is selected from the alpaca in vitro synthetic gene library, produced by phage display derived recombinant antibodies.

---

## Applications

- Enzyme-linked Immunoabsorbent Assay