

SARS-CoV-2

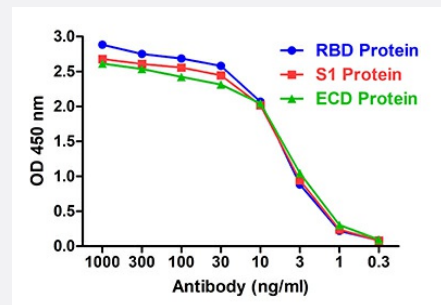
RecomAb™

SARS-CoV-2 S1 RBD recombinant monoclonal antibody, clone T5P7-G10

Catalog # RAB01099

Size 100 ug

Applications



Enzyme-linked Immunoabsorbent Assay

Specification

Product Description	Llama recombinant monoclonal antibody raised against a partial recombinant SARS-CoV-2 S1 protein RBD.
Antibody Species	Camelid
Immunogen	The protein corresponds to amino acids 319 - 537 at C-terminus in HEK293 cells.
Reactivity	SARS-CoV-2
Form	Liquid
Purification	Affinity chromatography
Recommend Usage	ELISA The optimal working dilution should be determined by the end user.
Storage Instruction	Store at -20°C. Aliquot to avoid repeated freezing and thawing.

Note

It is selected from the alpaca in vitro synthetic gene library, produced by phage display derived recombinant antibodies.

Applications

- Enzyme-linked Immunoabsorbent Assay