

RecomAb™

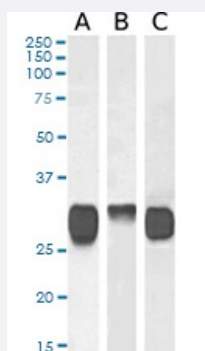
HLA class II monoclonal antibody, clone F3.3

Catalog # RAB01090

Size 200 ug

Applications

Western Blot (Tissue lysate)



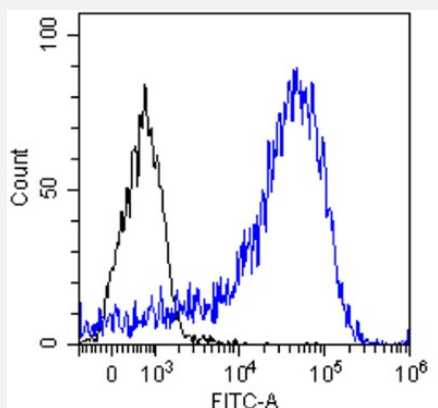
Western blot analysis of HLA class II monoclonal antibody, clone F3.3 (Cat # RAB01090).

Human spleen (A), human tonsil (B) and Daudi cell lysate (C) samples (35 ug protein in RIPA buffer) were resolved on a 10% SDS PAGE gel and blots probed with the chimeric rabbit antibody (Cat # RAB01090) at 0.01 ug/mL before detection using an anti-rabbit secondary antibody. A primary incubation of 1h was used and protein was detected by chemiluminescence. The expected band size for HLA II DR is ~30 kDa, depending upon the exact DR isoform expressed (c.f. Klitz et al, PMID: 12974796). Cat # RAB01090 successfully detected human HLA class II histocompatibility antigen DR in human spleen and tonsil lysate as well as Daudi cell lysate.

Flow Cytometry

Flow-cytometry using HLA class II monoclonal antibody, clone F3.3 (Cat # RAB01090).

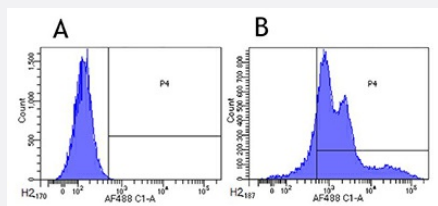
Daudi cells were stained with unimmunized rabbit IgG antibody (black line) or the rabbit-chimeric antibody (Cat # RAB01090, blue line) at a concentration of 10 ug/mL for 30 mins at RT. After washing, bound antibody was detected using anti-rabbit IgG JK (FITC-conjugate) antibody at 2 ug/mL and cells analyzed on a FACSCanto flow-cytometer.



Flow Cytometry

Flow-cytometry using HLA class II monoclonal antibody, clone F3.3 (Cat # RAB01090).

Human leukocytes were stained with an isotype control (panel A) or the rabbit-chimeric version of F3.3 (Cat # RAB01090, panel B) at a concentration of 1 ug/mL for 30 mins at RT. After washing, bound antibody was detected using a AF488 conjugated donkey anti-rabbit antibody and cells analysed on a FACSCanto flow-cytometer.



Specification

Product Description	Rabbit recombinant monoclonal antibody raised against human HLA class II.
Antibody Species	Rabbit
Reactivity	Human
Specificity	This antibody reacts to class II HLA molecules.
Form	Liquid
Purification	Protein A affinity purified
Isotype	Rabbit IgG, kappa
Recommend Usage	Flow Cytometry Western Blot The optimal working dilution should be determined by the end user.
Storage Buffer	In PBS (0.02% Proclin 300)
Storage Instruction	Store at 4°C. For long term storage store at -20°C. Aliquot to avoid repeated freezing and thawing.

Applications

- Western Blot (Tissue lysate)

Western blot analysis of HLA class II monoclonal antibody, clone F3.3 (Cat # RAB01090).

Human spleen (A), human tonsil (B) and Daudi cell lysate (C) samples (35 ug protein in RIPA buffer) were resolved on a 10% SDS PAGE gel and blots probed with the chimeric rabbit antibody (Cat # RAB01090) at 0.01 ug/mL before detection using an anti-rabbit secondary antibody. A primary incubation of 1h was used and protein was detected by chemiluminescence. The expected band size for HLA II DR is ~30 kDa, depending upon the exact DR isoform expressed (c.f. Klitz et al, PMID: 12974796). Cat # RAB01090 successfully detected human HLA class II histocompatibility antigen DR in human spleen and tonsil lysate as well as Daudi cell lysate.

- Flow Cytometry

Flow-cytometry using HLA class II monoclonal antibody, clone F3.3 (Cat # RAB01090).

Daudi cells were stained with unimmunized rabbit IgG antibody (black line) or the rabbit-chimeric antibody (Cat # RAB01090, blue line) at a concentration of 10 ug/mL for 30 mins at RT. After washing, bound antibody was detected using anti-rabbit IgG JK (FITC-conjugate) antibody at 2 ug/mL and cells analyzed on a FACSCanto flow-cytometer.

- Flow Cytometry

Flow-cytometry using HLA class II monoclonal antibody, clone F3.3 (Cat # RAB01090).

Human leukocytes were stained with an isotype control (panel A) or the rabbit-chimeric version of F3.3 (Cat # RAB01090, panel B) at a concentration of 1 ug/mL for 30 mins at RT. After washing, bound antibody was detected using a AF488 conjugated donkey anti-rabbit antibody and cells analysed on a FACSCanto flow-cytometer.