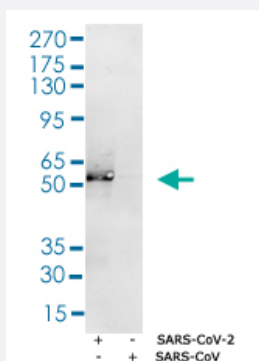


RecomAb™

# SARS-CoV-2 N recombinant monoclonal antibody, clone 75G5a

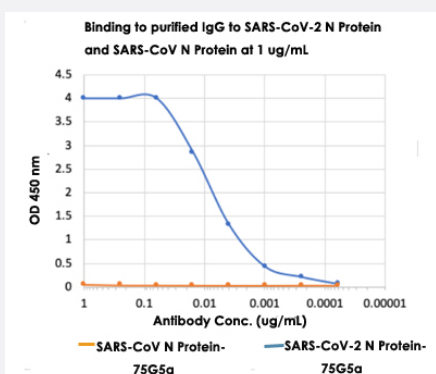
Catalog # RAB01053      Size 200 uL

## Applications



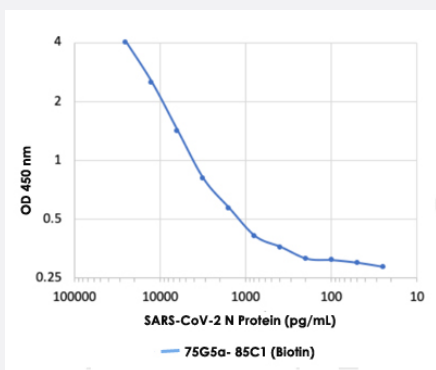
### Western Blot (Recombinant protein)

Western blot analysis of N (SARS-CoV-2) Recombinant Protein (Cat # P6687) and SARS-CoV N Protein (50 ng) probed with SARS-CoV-2 N recombinant monoclonal antibody, clone 75G5a (Cat # RAB01053) (1 ug/mL).



### Enzyme-linked Immunoabsorbent Assay

Microtiter wells were coated with N (SARS-CoV-2) Recombinant Protein (Cat # P6687) and SARS-CoV N Protein at 1 ug/mL. Purified SARS-CoV-2 N recombinant monoclonal antibody, clone 75G5a (Cat # RAB01053) was serially diluted 1:2 starting at 1 ug/mL, and shows very strong and specific binding to SARS-CoV-2 N Protein antigen, with no significant cross-reactivity to SARS-CoV NP antigen.



### Sandwich ELISA

A sandwich ELISA was performed using SARS-CoV-2 N recombinant monoclonal antibody, clone 75G5a (Cat # RAB01053) as a capture antibody and SARS-CoV-2 N recombinant monoclonal antibody, clone 85C1 (Biotin) (Cat # RAB01060) as a detection antibody. SARS-CoV-2 N Protein was serially diluted 1:2 starting at 25 ng/mL. SARS-CoV-2 N recombinant monoclonal antibody, clone 75G5a (Cat # RAB01053) and SARS-CoV-2 N recombinant monoclonal antibody, clone 85C1 (Biotin) (Cat # RAB01060) detected SARS-CoV-2 N Protein antigen at very high sensitivity as low as 25 pg/mL.

## Specification

<b>Product Description</b>	Rabbit recombinant monoclonal antibody raised against SARS-CoV-2 N.
<b>Antibody Species</b>	Rabbit
<b>Immunogen</b>	A synthetic peptide corresponding to N-terminus of SARS-CoV-2 N.
<b>Reactivity</b>	SARS-CoV-2
<b>Specificity</b>	Highly-specific to SARS-CoV-2 nucleoprotein; does not cross-react with nucleoprotein from SARS-CoV or other coronaviruses.
<b>Form</b>	Liquid
<b>Preparation Method</b>	75G5a is derived from a Fab phage display library made from a rabbit immunized with synthetic peptide specific to the N-terminus of SARS-CoV-2 nucleocapsid protein. Libraries were selected on N (SARS-CoV-2) Recombinant Protein (Cat # <a href="#">P6687</a> ) and Fab sup were screened on SARS-CoV-2 NP and SARS-CoV (2003) NP by ELISA. Positive clones were cloned into a bi-cistronic IgG vector and produced in HEK293 cells. The antibodies were purified from a Protein A column.
<b>Purification</b>	Protein A purification
<b>Concentration</b>	0.5 mg/mL
<b>Isotype</b>	IgG
<b>Recommend Usage</b>	ELISA The optimal working dilution should be determined by the end user.
<b>Storage Buffer</b>	In PBS (0.02% sodium azide)
<b>Storage Instruction</b>	Store at 4°C.

**Note**

For highest sensitivity, we recommend pairing unconjugated clone 75G5a (Cat # [RAB01053](#)), immobilized on the ELISA plate to capture COVID-19 NP antigen, with SARS-CoV-2 N recombinant monoclonal antibody, clone 85C10 (Biotin) (Cat # [RAB01062](#)) for detection using high-sensitivity streptavidin-HRP (Pierce # 21130). Other unconjugated and biotinylated anti-NP clones are provided as alternatives and also show high sensitivity and specificity. 75G5a (Cat # RAB01053), 84C4a (Cat # RAB01055), 84D7 (Cat # RAB01057), 85C1 (Cat # RAB01059), 85C10 (Cat # RAB01061), 85B4 (Cat # RAB01063), and 85E9 (Cat # RAB01065) can be directly coated to the ELISA wells as a capture antibody and the other antibody (e.g. biotinylated) [75G5a (Cat # RAB01054), 84C4a (Cat # RAB01056), 84D7 (Cat # RAB01058), 85C1 (Cat # RAB01060), 85C10 (Cat # RAB01062), 85B4 (Cat # RAB01064), and 85E9 (Cat # RAB01066)] can be used as a detecting antibody with StreptAvidin-HRP.

This product contains sodium azide: a POISONOUS AND HAZARDOUS SUBSTANCE which should be handled by trained staff only.

## Applications

- Western Blot (Recombinant protein)

Western blot analysis of N (SARS-CoV-2) Recombinant Protein (Cat # P6687) and SARS-CoV N Protein (50 ng) probed with SARS-CoV-2 N recombinant monoclonal antibody, clone 75G5a (Cat # RAB01053) (1 ug/mL).

- Enzyme-linked Immunoabsorbent Assay

Microtiter wells were coated with N (SARS-CoV-2) Recombinant Protein (Cat # P6687) and SARS-CoV N Protein at 1 ug/mL. Purified SARS-CoV-2 N recombinant monoclonal antibody, clone 75G5a (Cat # RAB01053) was serially diluted 1:2 starting at 1 ug/mL, and shows very strong and specific binding to SARS-CoV-2 N Protein antigen, with no significant cross-reactivity to SARS-CoV NP antigen.

- Sandwich ELISA

A sandwich ELISA was performed using SARS-CoV-2 N recombinant monoclonal antibody, clone 75G5a (Cat # RAB01053) as a capture antibody and SARS-CoV-2 N recombinant monoclonal antibody, clone 85C1 (Biotin) (Cat # RAB01060) as a detection antibody. SARS-CoV-2 N Protein was serially diluted 1:2 starting at 25 ng/mL. SARS-CoV-2 N recombinant monoclonal antibody, clone 75G5a (Cat # RAB01053) and SARS-CoV-2 N recombinant monoclonal antibody, clone 85C1 (Biotin) (Cat # RAB01060) detected SARS-CoV-2 N Protein antigen at very high sensitivity as low as 25 pg/mL.