

SARS-CoV-2

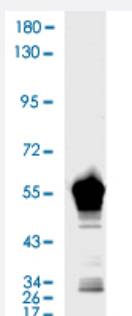
RecomAb™

# SARS-CoV-2 N recombinant human antibody, clone BHN04

Catalog # RAB01050

Size 100 ug

## Applications



### Western Blot (Recombinant protein)

Western Blot analysis of N (SARS-CoV-2) Recombinant Protein (Cat # P6660) 1 ug. Primary antibody: SARS-CoV-2 N recombinant human antibody, clone BHN04 (Cat # RAB01050) (1:2000). Secondary antibody: Goat anti-human IgG+HRP (1:5000). Exposure time: 3 s.

	1	
A	1.726	.1:10000
B	1.142	.1:20000
C	0.77	.1:40000
D	0.519	.1:80000
E	0.295	.1:160000
F	0.217	.1:320000
G	0.191	.1:640000
H	0.149	Blank control

### Enzyme-linked Immunoabsorbent Assay

An ELISA was performed using 1. Coating original concentration: 2 ug/mL, 100 uL/hole sample is N (SARS-CoV-2) Recombinant Protein (Cat # P6660) 2. Primary antibody: SARS-CoV-2 N recombinant human antibody, clone BHN04 (Cat # RAB01050) 3. Secondary antibody: Goat anti-human IgG+HRP (1:10000) 4. Develop: 15 min, 100 uL/hole 5. Stop: stop buffer 50 uL/hole 6. ELISA result are shown in the figure.

## Specification

Product Description	Human recombinant monoclonal antibody raised against SARS-CoV-2 N.
Antibody Species	Human
Source / Expression System	293F
Immunogen	Natural SARS-CoV-2
Reactivity	SARS-CoV-2
Specificity	This antibody detects endogenous levels of N protein.

<b>Form</b>	Liquid
<b>Purification</b>	Protein A purification
<b>Purity</b>	> 95% (by SDS-PAGE).
<b>Isotype</b>	IgG
<b>Recommend Usage</b>	ELISA (1:20000) Western Blot (1:2000-1:3000) The optimal working dilution should be determined by the end user.
<b>Storage Buffer</b>	In PBS, pH 7.2 (0.02% sodium azide)
<b>Storage Instruction</b>	Store at 4°C for short term. For long term storage, store at -20°C. Aliquot to avoid repeated freezing and thawing.
<b>Note</b>	This product contains sodium azide: a POISONOUS AND HAZARDOUS SUBSTANCE which should be handled by trained staff only.

## Applications

- Western Blot (Recombinant protein)

Western Blot analysis of N (SARS-CoV-2) Recombinant Protein (Cat # P6660) 1 ug. Primary antibody: SARS-CoV-2 N recombinant human antibody, clone BHN04 (Cat # RAB01050) (1:2000). Secondary antibody: Goat anti-human IgG+HRP (1:5000). Exposure time: 3 s.

- Enzyme-linked Immunoabsorbent Assay

An ELISA was performed using 1. Coating original concentration: 2 ug/mL, 100 uL/hole sample is N (SARS-CoV-2) Recombinant Protein (Cat # P6660) 2. Primary antibody: SARS-CoV-2 N recombinant human antibody, clone BHN04 (Cat # RAB01050) 3. Secondary antibody: Goat anti-human IgG+HRP (1:10000) 4. Develop: 15 min, 100 uL/hole 5. Stop: stop buffer 50 uL/hole 6. ELISA result are shown in the figure.