

SARS-CoV-2

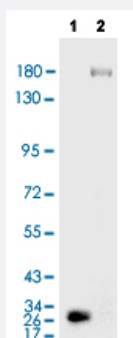
RecomAb™

SARS-CoV-2 S ECD recombinant human antibody, clone BHB05

Catalog # RAB01049

Size 100 ug

Applications



Western Blot (Recombinant protein)

Western Blot analysis of Lane 1: S1 (SARS-CoV-2) RBD Recombinant Protein (Cat # P6661) 1 ug and Lane 2: S (SARS-CoV-2) ECD Recombinant Protein (Cat # P6662) 1 ug. Primary antibody: SARS-CoV-2 S ECD recombinant human antibody, clone BHB05 (Cat # RAB01049) (1:4000). Secondary antibody: Goat anti-human IgG+HRP (1:5000). Exposure time: 120 s.

Enzyme-linked Immunoabsorbent Assay

An ELISA was performed using 1. Coating original concentration: 2 ug/mL, 100 uL/hole sample is S1 (SARS-CoV-2) RBD Recombinant Protein (Cat # P6661) and S (SARS-CoV-2) ECD Recombinant Protein (Cat # P6662) 2. Primary antibody: SARS-CoV-2 S ECD recombinant human antibody, clone BHB05 (Cat # RAB01049) 3. Secondary antibody: Goat anti-human IgG+HRP (1:10000) 4. Develop: 15 min, 100 uL/hole 5. Stop: stop buffer 50 uL/hole 6. ELISA result are shown in the figure.

	3	4	
A	0.115	2.449	1:1000
B	0.12	2.264	1:10000
C	0.101	2.122	1:20000
D	0.107	1.661	1:40000
E	0.109	1.284	1:80000
F	0.118	0.843	1:160000
G	0.123	0.566	1:320000
H	0.102	0.084	Blank control
	# P6661	# P6662	

Specification

Product Description	Human recombinant monoclonal antibody raised against SARS-CoV-2 S ECD.
Antibody Species	Human
Source / Expression System	293F
Immunogen	Natural SARS-CoV-2
Reactivity	SARS-CoV-2

Specificity	This antibody detects endogenous levels of S-ECD protein.
Form	Liquid
Purification	Protein A purification
Purity	> 95% (by SDS-PAGE).
Isotype	IgG
Recommend Usage	ELISA (1:80000) Neutralization Western Blot (1:3000-1:4000) The optimal working dilution should be determined by the end user.
Matched Pair	RAB01045 with RAB01049; RAB01046 with RAB01049
Storage Buffer	In PBS, pH 7.2
Storage Instruction	Store at 4°C for short term. For long term storage, store at -20°C. Aliquot to avoid repeated freezing and thawing.

Applications

- Western Blot (Recombinant protein)

Western Blot analysis of Lane 1: S1 (SARS-CoV-2) RBD Recombinant Protein (Cat # P6661) 1 ug and Lane 2: S (SARS-CoV-2) ECD Recombinant Protein (Cat # P6662) 1 ug. Primary antibody: SARS-CoV-2 S ECD recombinant human antibody, clone BHB05 (Cat # RAB01049) (1:4000). Secondary antibody: Goat anti-human IgG+HRP (1:5000). Exposure time: 120 s.

- Enzyme-linked Immunoabsorbent Assay

An ELISA was performed using 1. Coating original concentration: 2 ug/mL, 100 uL/hole sample is S1 (SARS-CoV-2) RBD Recombinant Protein (Cat # P6661) and S (SARS-CoV-2) ECD Recombinant Protein (Cat # P6662) 2. Primary antibody: SARS-CoV-2 S ECD recombinant human antibody, clone BHB05 (Cat # RAB01049) 3. Secondary antibody: Goat anti-human IgG+HRP (1:10000) 4. Develop: 15 min, 100 uL/hole 5. Stop: stop buffer 50 uL/hole 6. ELISA result are shown in the figure.

- Neutralization