

SARS-CoV-2

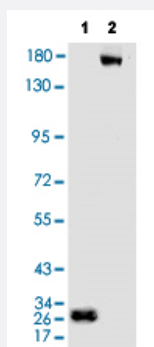
RecomAb™

# SARS-CoV-2 S ECD recombinant human antibody, clone BHB04

Catalog # RAB01048

Size 100 ug

## Applications



### Western Blot (Recombinant protein)

Western Blot analysis of Lane 1: S1 (SARS-CoV-2) RBD Recombinant Protein (Cat # P6661) 1 ug and Lane 2: S (SARS-CoV-2) ECD Recombinant Protein (Cat # P6662) 1 ug. Primary antibody: SARS-CoV-2 S ECD recombinant human antibody, clone BHB04 (Cat # RAB01048) (1:500). Secondary antibody: Goat anti-human IgG+HRP (1:5000). Exposure time: 30 s.

### Enzyme-linked Immunoabsorbent Assay

An ELISA was performed using 1. Coating original concentration: 2 ug/mL, 100 uL/hole sample is S1 (SARS-CoV-2) RBD Recombinant Protein (Cat # P6661) and S (SARS-CoV-2) ECD Recombinant Protein (Cat # P6662) 2. Primary antibody: SARS-CoV-2 S ECD recombinant human antibody, clone BHB04 (Cat # RAB01048) 3. Secondary antibody: Goat anti-human IgG+HRP (1:10000) 4. Develop: 15 min, 100 uL/hole 5. Stop: stop buffer 50 uL/hole 6. ELISA result are shown in the figure.

	1	2	
A	0.082	2.477	1:10000
B	0.132	2.109	1:20000
C	0.127	2.039	1:40000
D	0.134	1.72	1:80000
E	0.109	1.317	1:160000
F	0.12	0.863	1:320000
G	0.123	0.538	1:640000
H	0.082	0.154	Blank control
	# P6661	# P6662	

## Specification

Product Description	Human recombinant monoclonal antibody raised against SARS-CoV-2 S ECD.
Antibody Species	Human
Source / Expression System	293F
Immunogen	Natural SARS-CoV-2
Reactivity	SARS-CoV-2

<b>Specificity</b>	This antibody detects endogenous levels of S-ECD protein.
<b>Form</b>	Liquid
<b>Purification</b>	Protein A purification
<b>Purity</b>	> 95% (by SDS-PAGE).
<b>Isotype</b>	IgG
<b>Recommend Usage</b>	ELISA (1:160000) Neutralization Western Blot (1:500-1:1000) The optimal working dilution should be determined by the end user.
<b>Matched Pair</b>	RAB01045 with RAB01048; RAB01046 with RAB01048; RAB01047 with RAB01048
<b>Storage Buffer</b>	In PBS, pH 7.2
<b>Storage Instruction</b>	Store at 4°C for short term. For long term storage, store at -20°C. Aliquot to avoid repeated freezing and thawing.

## Applications

- Western Blot (Recombinant protein)

Western Blot analysis of Lane 1: S1 (SARS-CoV-2) RBD Recombinant Protein (Cat # P6661) 1 ug and Lane 2: S (SARS-CoV-2) ECD Recombinant Protein (Cat # P6662) 1 ug. Primary antibody: SARS-CoV-2 S ECD recombinant human antibody, clone BHB04 (Cat # RAB01048) (1:500). Secondary antibody: Goat anti-human IgG+HRP (1:5000). Exposure time: 30 s.

- Enzyme-linked Immunoabsorbent Assay

An ELISA was performed using 1. Coating original concentration: 2 ug/mL, 100 uL/hole sample is S1 (SARS-CoV-2) RBD Recombinant Protein (Cat # P6661) and S (SARS-CoV-2) ECD Recombinant Protein (Cat # P6662) 2. Primary antibody: SARS-CoV-2 S ECD recombinant human antibody, clone BHB04 (Cat # RAB01048) 3. Secondary antibody: Goat anti-human IgG+HRP (1:10000) 4. Develop: 15 min, 100 uL/hole 5. Stop: stop buffer 50 uL/hole 6. ELISA result are shown in the figure.

- Neutralization