

SARS-CoV-2

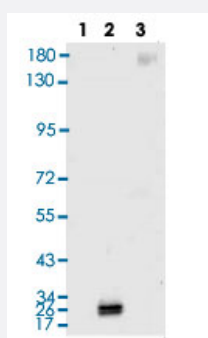
RecomAb™

# SARS-CoV-2 S ECD/RBD recombinant human antibody, clone BHB2

Catalog # RAB01046

Size 100 ug

## Applications



### Western Blot

Western blot analysis with SARS-CoV-2 S ECD/RBD recombinant human antibody, clone BHB2 (1:500) and Goat Anti-Human IgG (H&L) secondary antibody (HRP) (1:5000) of Lane 1: N (SARS-CoV-2) Recombinant Protein (Cat # P6660), Lane 2: S1 (SARS-CoV-2) RBD Recombinant Protein (Cat # P6661), Lane 3: S (SARS-CoV-2) ECD Recombinant Protein (Cat # P6662).

### Enzyme-linked Immunoabsorbent Assay

ELISA analysis was coated by Lane 1: S (SARS-CoV-2) ECD Recombinant Protein (Cat # P6662), Lane 2: S1 (SARS-CoV-2) RBD Recombinant Protein (Cat # P6661), 100 uL/well at 2 ug/mL, was performed by loading SARS-CoV-2 S ECD/RBD recombinant human antibody, clone BHB2 at various concentrations and Goat Anti-Human IgG (H&L) secondary antibody (HRP) (1:10000).

#### ELISA experiment

	1	2	
A	2.206	2.611	1:1000
B	2.159	2.336	1:10000
C	2.434	2.09	1:20000
D	2.37	1.671	1:40000
E	2.082	1.201	1:80000
F	1.756	0.777	1:160000
G	1.234	0.439	1:320000
H	0.337	0.068	Blank control

## Specification

Product Description	Human recombinant monoclonal antibody raised against SARS-CoV-2 S ECD/RBD.
Antibody Species	Human
Source / Expression System	293F
Immunogen	Natural SARS-CoV-2
Reactivity	SARS-CoV-2

Specificity	The antibody detects endogenous levels of SARS-CoV-2 S ECD/RBD.
Form	Liquid
Purification	Affinity purification
Purity	> 95% by SDS-PAGE
Isotype	IgG
Recommend Usage	ELISA Neutralization Western Blot (1:1000-1:2000) The optimal working dilution should be determined by the end user.
Matched Pair	RAB01048 (for SARS-CoV-2 S ECD) RAB01049 (for SARS-CoV-2 S ECD)
Storage Buffer	In PBS, pH 7.2
Storage Instruction	Store at 4°C for short term. For long term storage store at -20°C. Aliquot to avoid repeated freezing and thawing.

## Applications

- Western Blot

Western blot analysis with SARS-CoV-2 S ECD/RBD recombinant human antibody, clone BHB2 (1:500) and Goat Anti-Human IgG (H&L) secondary antibody (HRP) (1:5000) of Lane 1: N (SARS-CoV-2) Recombinant Protein (Cat # P6660), Lane 2: S1 (SARS-CoV-2) RBD Recombinant Protein (Cat # P6661), Lane 3: S (SARS-CoV-2) ECD Recombinant Protein (Cat # P6662).

- Enzyme-linked Immunoabsorbent Assay

ELISA analysis was coated by Lane 1: S (SARS-CoV-2) ECD Recombinant Protein (Cat # P6662), Lane 2: S1 (SARS-CoV-2) RBD Recombinant Protein (Cat # P6661), 100  $\mu$ L/well at 2  $\mu$ g/mL, was performed by loading SARS-CoV-2 S ECD/RBD recombinant human antibody, clone BHB2 at various concentrations and Goat Anti-Human IgG (H&L) secondary antibody (HRP) (1:10000).

- Neutralization