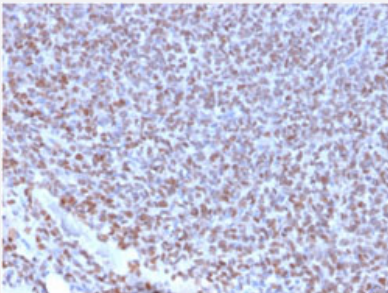


RecomAb™

NKX2-2 recombinant monoclonal antibody, clone NX2/2198R

Catalog # RAB00700 Size 100 ug

Applications



Immunohistochemistry (Formalin/PFA-fixed paraffin-embedded sections)

Immunohistochemical staining of human ewing's sarcoma.

Specification

Product Description	Rabbit recombinant monoclonal antibody raised against partial human NKX2-2.
Antibody Species	Rabbit
Immunogen	Recombinant protein corresponding to amino acids 1-119 of human NKX2-2.
Reactivity	Human
Form	Liquid
Purification	Protein A/G purification
Isotype	IgG
Recommend Usage	Immunohistochemistry (Formalin/PFA-fixed paraffin-embedded sections) (1-2 ug/mL) The optimal working dilution should be determined by the end user.
Storage Buffer	In 10 mM PBS (0.05% BSA and 0.05% azide)
Storage Instruction	Store at 2 to 8°C.

Note

This product contains sodium azide: a POISONOUS AND HAZARDOUS SUBSTANCE which should be handled by trained staff only.

Applications

- Immunohistochemistry (Formalin/PFA-fixed paraffin-embedded sections)

Immunohistochemical staining of human ewing's sarcoma.

Gene Info — NKX2-2

Entrez GeneID [4821](#)

Protein Accession# [P41182](#)

Gene Name NKX2-2

Gene Alias NKX2.2, NKX2B

Gene Description NK2 homeobox 2

Omim ID [604612](#)

Gene Ontology [Hyperlink](#)

Gene Summary The protein encoded by this gene contains a homeobox domain and may be involved in the morphogenesis of the central nervous system. This gene is found on chromosome 20 near NKX2-4, and these two genes appear to be duplicated on chromosome 14 in the form of TITF1 and NKX2-8. The encoded protein is likely to be a nuclear transcription factor. [provided by RefSeq]

Other Designations NK-2 homolog B|NK2 transcription factor related, locus 2|NK2 transcription factor-like protein B|OTTHUMP00000030405|homeobox protein NK-2 homolog B

Pathway

- [Maturity onset diabetes of the young](#)

Disease

- [Diabetes Mellitus](#)