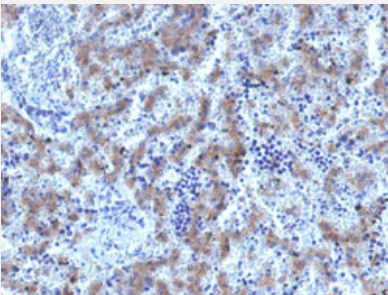


RecomAb™

# GPC3 recombinant monoclonal antibody, clone GPC3/1534R

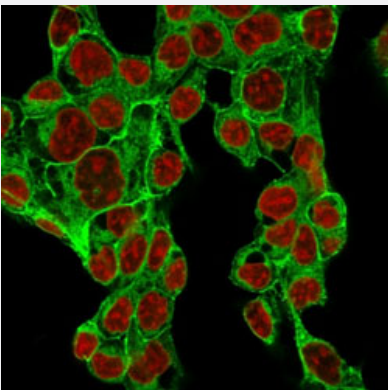
Catalog # RAB00698      Size 100 ug

## Applications



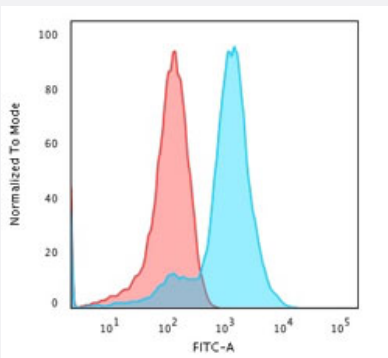
### Immunohistochemistry (Formalin/PFA-fixed paraffin-embedded sections)

Immunohistochemical staining of human fetal liver.



### Immunofluorescence

Immunofluorescence staining of MeOH-fixed Human HepG2 cells labeling Glypican-3. This antibody followed by Goat anti-rabbit IgG-CF488 (Green). The nuclear counterstain is Reddot (Red).



### Flow Cytometry

Flow cytometric analysis of MeOH-fixed HepG2 cells. This antibody followed by goat anti-rabbit IgG-CF488 (Blue). Isotype Control (Red).

## Specification

Product Description	Rabbit recombinant monoclonal antibody raised against full length human GPC3.
Antibody Species	Rabbit
Immunogen	Recombinant protein corresponding to full-length human GPC3.
Reactivity	Human, Rat
Form	Liquid
Purification	Protein A purification
Isotype	IgG
Recommend Usage	Flow Cytometry (1-2 ug/million cells) Immunohistochemistry (Formalin/PFA-fixed paraffin-embedded sections) (1-2 ug/mL) Immunofluorescence (1-2 ug/mL) The optimal working dilution should be determined by the end user.
Storage Buffer	In 10 mM PBS (0.05% BSA and 0.05% azide)
Storage Instruction	Store at 2 to 8°C.
Note	This product contains sodium azide: a POISONOUS AND HAZARDOUS SUBSTANCE which should be handled by trained staff only.

## Applications

- Immunohistochemistry (Formalin/PFA-fixed paraffin-embedded sections)

Immunohistochemical staining of human fetal liver.

- Immunofluorescence

Immunofluorescence staining of MeOH-fixed Human HepG2 cells labeling Glypican-3. This antibody followed by Goat anti-rabbit IgG-CF488 (Green). The nuclear counterstain is Reddot (Red).

- Flow Cytometry

Flow cytometric analysis of MeOH-fixed HepG2 cells. This antibody followed by goat anti-rabbit IgG-CF488 (Blue). Isotype Control (Red).

## Gene Info — GPC3

Entrez GeneID

[2719](#)

Protein Accession#	<a href="#">P08729</a>
Gene Name	GPC3
Gene Alias	DGSX, OCI-5, SDYS, SGB, SGBS, SGBS1
Gene Description	glypican 3
Omim ID	<a href="#">194070</a> <a href="#">300037</a> <a href="#">312870</a>
Gene Ontology	<a href="#">Hyperlink</a>
Gene Summary	<p>Cell surface heparan sulfate proteoglycans are composed of a membrane-associated protein core substituted with a variable number of heparan sulfate chains. Members of the glypican-related integral membrane proteoglycan family (GRIPS) contain a core protein anchored to the cytoplasmic membrane via a glycosyl phosphatidylinositol linkage. These proteins may play a role in the control of cell division and growth regulation. The protein encoded by this gene can bind to and inhibit the dipeptidyl peptidase activity of CD26, and it can induce apoptosis in certain cell types. Deletion mutations in this gene are associated with Simpson-Golabi-Behmel syndrome, also known as Simpson dysmorphia syndrome. Alternative splicing results in multiple transcript variants. [provided by RefSeq]</p>
Other Designations	OTTHUMP00000024058 OTTHUMP00000062492 glypican proteoglycan 3