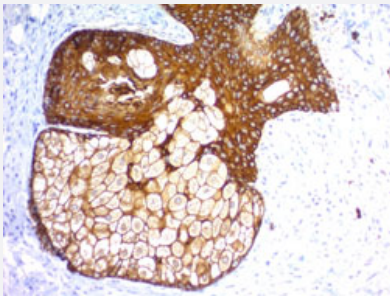


RecomAb™

# KRT77/KRT76 recombinant monoclonal antibody, clone KRTH/1576R + KRTL/1577R

Catalog # RAB00689      Size 100 ug

## Applications



Immunohistochemistry (Formalin/PFA-fixed paraffin-embedded sections)

Immunohistochemical staining of human skin.

## Specification

Product Description	Rabbit recombinant monoclonal antibody raised against full length human KRT77/KRT76.
Antibody Species	Rabbit
Immunogen	Recombinant protein corresponding to full-length human KRT77 and KRT76.
Reactivity	Human
Form	Liquid
Purification	Protein A/G purification
Isotype	IgG
Recommend Usage	Immunohistochemistry (Formalin/PFA-fixed paraffin-embedded sections) (0.25-0.5 ug/mL) The optimal working dilution should be determined by the end user.
Storage Buffer	In 1 mg/mL PBS

## Storage Instruction

Store at -20 to -80°C.  
Aliquot to avoid repeated freezing and thawing.

## Applications

- Immunohistochemistry (Formalin/PFA-fixed paraffin-embedded sections)

Immunohistochemical staining of human skin.

## Gene Info — KRT76

Entrez GeneID [51350](#)

Protein Accession# [Q7Z794 ; Q01546](#)

Gene Name KRT76

Gene Alias HUMCYT2A, KRT2B, KRT2P

Gene Description keratin 76

Gene Ontology [Hyperlink](#)

**Gene Summary** Keratins are intermediate filament proteins responsible for the structural integrity of epithelial cells and are subdivided into epithelial keratins and hair keratins. The type II keratins are clustered in a region of chromosome 12q13. [provided by RefSeq]

**Other Designations** cytokeratin 2|keratin 2p

## Gene Info — KRT77

Entrez GeneID [374454](#)

Protein Accession# [Q7Z794 ; Q01546](#)

Gene Name KRT77

Gene Alias K1B, KRT1B, MGC148087

Gene Description keratin 77

Omim ID [611158](#)

Gene Ontology [Hyperlink](#)

**Gene Summary**

Keratins are intermediate filament proteins responsible for the structural integrity of epithelial cells and are subdivided into epithelial keratins and hair keratins. This gene encodes an epithelial keratin that is expressed in the skin and eccrine sweat glands. The type II keratins are clustered in a region of chromosome 12q13

**Other Designations**

keratin 1B