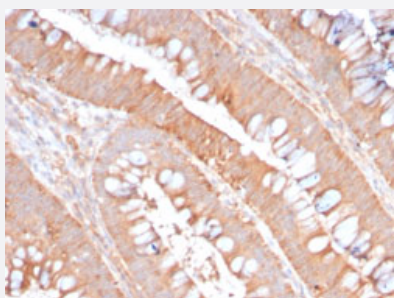


RecomAb™

CD59 recombinant monoclonal antibody, clone MACIF/2867R

Catalog # RAB00675 Size 100 ug

Applications



Immunohistochemistry (Formalin/PFA-fixed paraffin-embedded sections)

Immunohistochemical staining of human colon carcinoma.

Specification

Product Description	Rabbit recombinant monoclonal antibody raised against full length human CD59.
Antibody Species	Rabbit
Immunogen	Recombinant protein corresponding to full-length human CD59.
Reactivity	Human
Form	Liquid
Purification	Protein A purification
Isotype	IgG
Recommend Usage	Immunohistochemistry (Formalin/PFA-fixed paraffin-embedded sections) (1-2 ug/mL) The optimal working dilution should be determined by the end user.
Storage Buffer	In 1 mg/mL PBS
Storage Instruction	Store at -20 to -80°C. Aliquot to avoid repeated freezing and thawing.

Applications

- Immunohistochemistry (Formalin/PFA-fixed paraffin-embedded sections)

Immunohistochemical staining of human colon carcinoma.

Gene Info — CD59

Entrez GeneID	966
Protein Accession#	P13987
Gene Name	CD59
Gene Alias	16.3A5, 1F5, EJ16, EJ30, EL32, FLJ38134, FLJ92039, G344, HRF-20, HRF20, MAC-IP, MAC1 F, MEM43, MGC2354, MIC11, MIN1, MIN2, MIN3, MIRL, MSK21, p18-20
Gene Description	CD59 molecule, complement regulatory protein
Omim ID	107271
Gene Ontology	Hyperlink
Gene Summary	This gene encodes a cell surface glycoprotein that regulates complement-mediated cell lysis, and it is involved in lymphocyte signal transduction. This protein is a potent inhibitor of the complement membrane attack complex, whereby it binds complement C8 and/or C9 during the assembly of this complex, thereby inhibiting the incorporation of multiple copies of C9 into the complex, which is necessary for osmolytic pore formation. This protein also plays a role in signal transduction pathways in the activation of T cells. Mutations in this gene cause CD59 deficiency, a disease resulting in hemolytic anemia and thrombosis, and which causes cerebral infarction. Multiple alternatively spliced transcript variants, which encode the same protein, have been identified for this gene. [provided by RefSeq]
Other Designations	20 kDa homologous restriction factor CD59 antigen CD59 antigen p18-20 (antigen identified by monoclonal antibodies 16.3A5, EJ16, EJ30, EL32 and G344) CD59 glycoprotein Ly-6-like protein T cell-activating protein human leukocyte antigen MIC11 lymphocytic a

Pathway

- [Complement and coagulation cascades](#)
- [Hematopoietic cell lineage](#)

Disease

- [Genetic Predisposition to Disease](#)
- [Lymphoma](#)
- [Macular Degeneration](#)