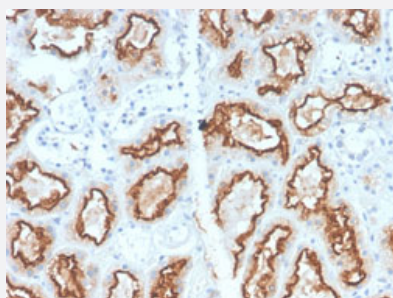


RecomAb™

CA9 recombinant monoclonal antibody, clone CA9/2993R

Catalog # RAB00656 Size 100 ug

Applications



Immunohistochemistry (Formalin/PFA-fixed paraffin-embedded sections)

Immunohistochemical staining of human renal cell carcinoma.

Specification

Product Description	Rabbit recombinant monoclonal antibody raised against full length human CA9.
Antibody Species	Rabbit
Immunogen	Recombinant protein corresponding to full-length human CA9.
Reactivity	Horse, Human
Form	Liquid
Purification	Protein A/G purification
Isotype	IgG
Recommend Usage	Immunohistochemistry (Formalin/PFA-fixed paraffin-embedded sections) (1-2 ug/mL) The optimal working dilution should be determined by the end user.
Storage Buffer	In 1 mg/mL PBS
Storage Instruction	Store at -20 to -80°C.

Applications

- Immunohistochemistry (Formalin/PFA-fixed paraffin-embedded sections)

Immunohistochemical staining of human renal cell carcinoma.

Gene Info — CA9

Entrez GeneID [768](#)

Protein Accession# [Q16790](#)

Gene Name CA9

Gene Alias CAIX, MN

Gene Description carbonic anhydrase IX

Omim ID [603179](#)

Gene Ontology [Hyperlink](#)

Gene Summary Carbonic anhydrases (CAs) are a large family of zinc metalloenzymes that catalyze the reversible hydration of carbon dioxide. They participate in a variety of biological processes, including respiration, calcification, acid-base balance, bone resorption, and the formation of aqueous humor, cerebrospinal fluid, saliva, and gastric acid. They show extensive diversity in tissue distribution and in their subcellular localization. CA IX is a transmembrane protein and the only tumor-associated carbonic anhydrase isoenzyme known. It is expressed in all clear-cell renal cell carcinoma, but is not detected in normal kidney or most other normal tissues. It may be involved in cell proliferation and transformation. This gene was mapped to 17q21.2 by fluorescence in situ hybridization, however, radiation hybrid mapping localized it to 9p13-p12. [provided by RefSeq]

Other Designations OTTHUMP00000022773|RCC-associated protein G250|carbonic dehydratase

Pathway

- [Nitrogen metabolism](#)

Disease

- [Alzheimer disease](#)
- [Carcinoma](#)
- [Cardiovascular Diseases](#)

- [Cerebral Amyloid Angiopathy](#)
- [Diabetes Mellitus](#)
- [Edema](#)
- [Genetic Predisposition to Disease](#)
- [Head and Neck Neoplasms](#)
- [Kidney Neoplasms](#)
- [Neoplasm Recurrence](#)
- [Neoplasms](#)
- [Neuroblastoma](#)