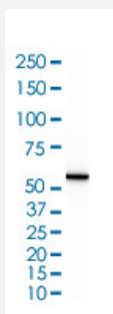


RecomAb™

VIM recombinant monoclonal antibody, clone VIM/1937R

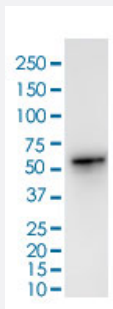
Catalog # RAB00653 Size 100 ug

Applications



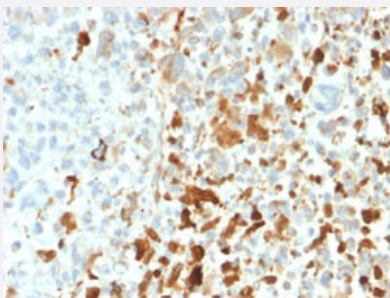
Western Blot (Cell lysate)

Western Blot (cell lysate) analysis of A375 cell lysate.



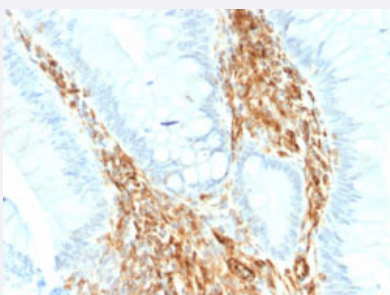
Western Blot (Cell lysate)

Western Blot (cell lysate) analysis of U-87 cell lysate.



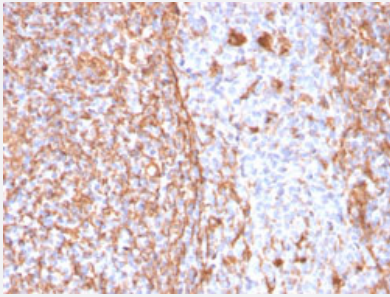
Immunohistochemistry (Formalin/PFA-fixed paraffin-embedded sections)

Immunohistochemical staining of human melanoma.



Immunohistochemistry (Formalin/PFA-fixed paraffin-embedded sections)

Immunohistochemical staining of human colon carcinoma.



Immunohistochemistry (Formalin/PFA-fixed paraffin-embedded sections)

Immunohistochemical staining of human tonsil.

Specification

Product Description	Rabbit recombinant monoclonal antibody raised against full length human VIM.
Antibody Species	Rabbit
Immunogen	Recombinant protein corresponding to full-length human VIM.
Reactivity	Human
Form	Liquid
Purification	Protein A/G purification
Isotype	IgG
Recommend Usage	Immunohistochemistry (Formalin/PFA-fixed paraffin-embedded sections) (1-2 ug/mL) Western Blot (1-2 ug/mL) The optimal working dilution should be determined by the end user.
Storage Buffer	In 1 mg/mL PBS
Storage Instruction	Store at -20 to -80°C.

Applications

- Western Blot (Cell lysate)

Western Blot (cell lysate) analysis of A375 cell lysate.

- Western Blot (Cell lysate)

Western Blot (cell lysate) analysis of U-87 cell lysate.

- Immunohistochemistry (Formalin/PFA-fixed paraffin-embedded sections)
Immunohistochemical staining of human melanoma.
- Immunohistochemistry (Formalin/PFA-fixed paraffin-embedded sections)
Immunohistochemical staining of human colon carcinoma.
- Immunohistochemistry (Formalin/PFA-fixed paraffin-embedded sections)
Immunohistochemical staining of human tonsil.

Gene Info — VIM

Entrez GeneID [7431](#)

Protein Accession# [P08670](#)

Gene Name VIM

Gene Alias FLJ36605

Gene Description vimentin

Omim ID [193060](#)

Gene Ontology [Hyperlink](#)

Gene Summary This gene encodes a member of the intermediate filament family. Intermediate filamentents, along with microtubules and actin microfilaments, make up the cytoskeleton. The protein encoded by thi s gene is responsible for maintaining cell shape, integrity of the cytoplasm, and stabilizing cytoske letal interactions. It is also involved in the immune response, and controls the transport of low-dens ity lipoprotein (LDL)-derived cholesterol from a lysosome to the site of esterification. It functions a s an organizer of a number of critical proteins involved in attachment, migration, and cell signaling. Mutations in this gene causes a dominant, pulverulent cataract

Other Designations OTTHUMP00000019224

Disease

- [Alzheimer disease](#)
- [Anorexia Nervosa](#)
- [Bulimia](#)
- [Cognition](#)

- [Genetic Predisposition to Disease](#)