

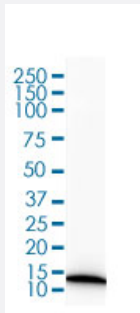
RecomAb™

S100A4 recombinant monoclonal antibody, clone S100A4/2750R

Catalog # RAB00622

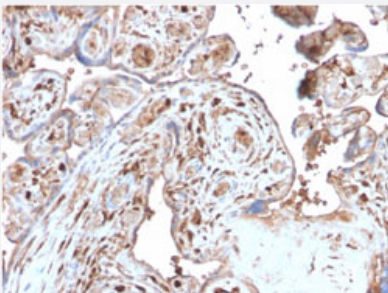
Size 100 ug

Applications



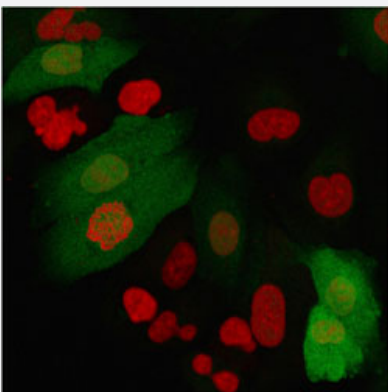
Western Blot (Cell lysate)

Western Blot (cell lysate) analysis of HeLa cell lysate.



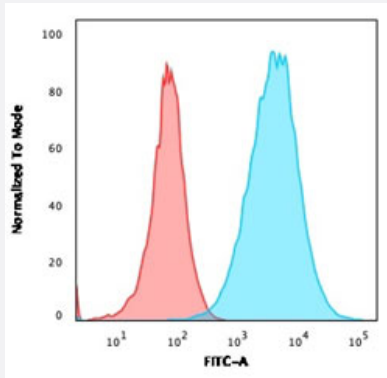
Immunohistochemistry (Formalin/PFA-fixed paraffin-embedded sections)

Immunohistochemical staining of human placenta.



Immunofluorescence

Immunofluorescence staining of A549 cells. Goat anti-mouse IgG-CF488 (Blue) ; Nuclei are stained with Reddot (red).



Flow Cytometry

Flow cytometric analysis of A549 cells. Goat anti-rabbit IgG-CF488 (Blue) ; Isotype Control (Red).

Specification

Product Description	Rabbit recombinant monoclonal antibody raised against partial human S100A4.
Antibody Species	Rabbit
Immunogen	Recombinant protein corresponding to amino acids 1-200 of human S100A4.
Reactivity	Human, Mouse
Form	Liquid
Purification	Protein A/G purification
Isotype	IgG
Recommend Usage	Flow Cytometry (1-2 ug/million cells) Immunohistochemistry (Formalin/PFA-fixed paraffin-embedded sections) (1-2 ug/mL) Immunofluorescence (1-2 ug/mL) Western Blot (1-2 ug/mL) The optimal working dilution should be determined by the end user.
Storage Buffer	In 1 mg/mL PBS
Storage Instruction	Store at -20 to -80°C.

Applications

- Western Blot (Cell lysate)

Western Blot (cell lysate) analysis of HeLa cell lysate.

- Immunohistochemistry (Formalin/PFA-fixed paraffin-embedded sections)

Immunohistochemical staining of human placenta.

- Immunofluorescence

Immunofluorescence staining of A549 cells. Goat anti-mouse IgG-CF488 (Blue) ; Nuclei are stained with Reddot (red).

- Flow Cytometry

Flow cytometric analysis of A549 cells. Goat anti-rabbit IgG-CF488 (Blue) ; Isotype Control (Red).

Gene Info — S100A4

Entrez GeneID [6275](#)

Protein Accession# [P26447](#)

Gene Name S100A4

Gene Alias 18A2, 42A, CAPL, FSP1, MTS1, P9KA, PEL98

Gene Description S100 calcium binding protein A4

Omim ID [114210](#)

Gene Ontology [Hyperlink](#)

Gene Summary

The protein encoded by this gene is a member of the S100 family of proteins containing 2 EF-hand calcium-binding motifs. S100 proteins are localized in the cytoplasm and/or nucleus of a wide range of cells, and involved in the regulation of a number of cellular processes such as cell cycle progression and differentiation. S100 genes include at least 13 members which are located as a cluster on chromosome 1q21. This protein may function in motility, invasion, and tubulin polymerization. Chromosomal rearrangements and altered expression of this gene have been implicated in tumor metastasis. Multiple alternatively spliced variants, encoding the same protein, have been identified. [provided by RefSeq]

Other Designations

OTTHUMP00000015467|OTTHUMP00000015468|OTTHUMP00000015469|OTTHUMP00000032895|S100 calcium binding protein A4 (calcium protein, calvasculin, metastasin, murine placental homolog)|S100 calcium-binding protein A4|S100 calcium-binding protein A4 (calcium prote

Disease

- [Dermatitis](#)
- [Genetic Predisposition to Disease](#)

- [Liver Cirrhosis](#)