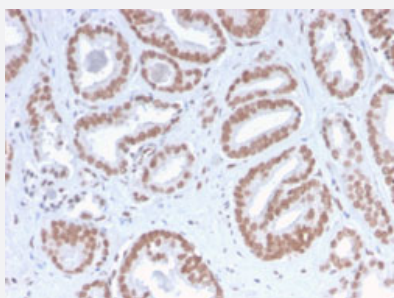


RecomAb™

# ATRX recombinant monoclonal antibody, clone ATRX/2900R

Catalog # RAB00607      Size 100 ug

## Applications



### Immunohistochemistry (Formalin/PFA-fixed paraffin-embedded sections)

Immunohistochemical staining of human prostate carcinoma.

## Specification

Product Description	Rabbit recombinant monoclonal antibody raised against human ATRX.
Antibody Species	Rabbit
Immunogen	Recombinant protein corresponding to human ATRX.
Reactivity	Human
Form	Liquid
Purification	Protein A/G purification
Isotype	IgG
Recommend Usage	Immunohistochemistry (Formalin/PFA-fixed paraffin-embedded sections) (1-2 ug/mL) The optimal working dilution should be determined by the end user.
Storage Buffer	In 1 mg/mL PBS
Storage Instruction	Store at -20 to -80°C.

## Applications

- Immunohistochemistry (Formalin/PFA-fixed paraffin-embedded sections)

Immunohistochemical staining of human prostate carcinoma.

## Gene Info — ATRX

Entrez GeneID	<a href="#">546</a>
Protein Accession#	<a href="#">P46100</a>
Gene Name	ATRX
Gene Alias	ATR2, MGC2094, MRXHF1, RAD54, RAD54L, SFM1, SHS, XH2, XNP, ZNF-HX
Gene Description	alpha thalassemia/mental retardation syndrome X-linked (RAD54 homolog, <i>S. cerevisiae</i> )
Omim ID	<a href="#">300032</a> <a href="#">300448</a> <a href="#">301040</a> <a href="#">309580</a>
Gene Ontology	<a href="#">Hyperlink</a>
Gene Summary	The protein encoded by this gene contains an ATPase/helicase domain, and thus it belongs to the SWI/SNF family of chromatin remodeling proteins. The mutations of this gene are associated with an X-linked mental retardation (XLMR) syndrome most often accompanied by alpha-thalassemia (ATRX) syndrome. These mutations have been shown to cause diverse changes in the pattern of DNA methylation, which may provide a link between chromatin remodeling, DNA methylation, and gene expression in developmental processes. This protein is found to undergo cell cycle-dependent phosphorylation, which regulates its nuclear matrix and chromatin association, and suggests its involvement in the gene regulation at interphase and chromosomal segregation in mitosis. Multiple alternatively spliced transcript variants encoding distinct isoforms have been reported. [provided by RefSeq]
Other Designations	DNA dependent ATPase and helicase OTTHUMP00000024265 OTTHUMP00000062079 X-linked nuclear protein Zinc finger helicase helicase 2, X-linked transcriptional regulator ATRX

## Disease

- [Breast cancer](#)
- [Breast Neoplasms](#)
- [Genetic Predisposition to Disease](#)