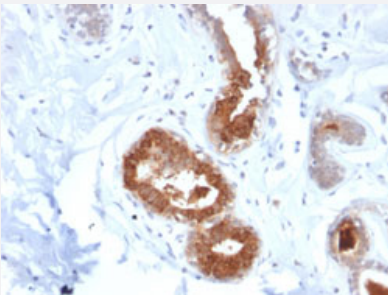


RecomAb™

SCGB2A2 recombinant monoclonal antibody, clone MGB1/2123R

Catalog # RAB00576 Size 100 ug

Applications



Immunohistochemistry (Formalin/PFA-fixed paraffin-embedded sections)

Immunohistochemical staining of human breast carcinoma.

Specification

Product Description	Rabbit recombinant monoclonal antibody raised against full length human SCGB2A2.
Antibody Species	Rabbit
Immunogen	Recombinant protein corresponding to full-length human SCGB2A2.
Reactivity	Human
Form	Liquid
Purification	Protein A/G purification
Isotype	IgG
Recommend Usage	Immunohistochemistry (Formalin/PFA-fixed paraffin-embedded sections) (1-2 ug/mL) The optimal working dilution should be determined by the end user.
Storage Buffer	In 1 mg/mL PBS
Storage Instruction	Store at -20 to -80°C.

Applications

- Immunohistochemistry (Formalin/PFA-fixed paraffin-embedded sections)

Immunohistochemical staining of human breast carcinoma.

Gene Info — SCGB2A2

Entrez GeneID	4250
Protein Accession#	Q13296
Gene Name	SCGB2A2
Gene Alias	MGB1, MGC71974, UGB2
Gene Description	secretoglobin, family 2A, member 2
Omim ID	605562
Gene Ontology	Hyperlink
Gene Summary	family 2A
Other Designations	mammaglobin 1 mammaglobin A