

RecomAb™

MCM7 recombinant monoclonal antibody, clone MCM7/2832R

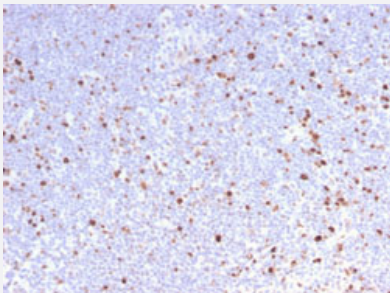
Catalog # RAB00575 Size 100 ug

Applications



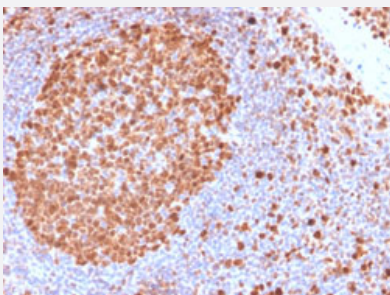
Western Blot

Western Blot analysis of (1) MCF-7, (2) HEK-293, (3) A549, (4) SKBr3, (5) HeP2 cell lysates.



Immunohistochemistry (Formalin/PFA-fixed paraffin-embedded sections)

Immunohistochemical staining of human lymph node.



Immunohistochemistry (Formalin/PFA-fixed paraffin-embedded sections)

Immunohistochemical staining of human tonsil.

Specification

Product Description

Rabbit recombinant monoclonal antibody raised against partial human MCM7.

Antibody Species	Rabbit
Immunogen	Recombinant protein corresponding to amino acids 195-319 of human MCM7.
Reactivity	Human
Form	Liquid
Purification	Protein A/G purification
Isotype	IgG
Recommend Usage	Immunohistochemistry (Formalin/PFA-fixed paraffin-embedded sections) (1-2 ug/mL) Western Blot (1-2 ug/mL) The optimal working dilution should be determined by the end user.
Storage Buffer	In 1 mg/mL PBS
Storage Instruction	Store at -20 to -80°C.

Applications

- Western Blot

Western Blot analysis of (1) MCF-7, (2) HEK-293, (3) A549, (4) SKBr3, (5) HeP2 cell lysates.

- Immunohistochemistry (Formalin/PFA-fixed paraffin-embedded sections)

Immunohistochemical staining of human lymph node.

- Immunohistochemistry (Formalin/PFA-fixed paraffin-embedded sections)

Immunohistochemical staining of human tonsil.

Gene Info — MCM7

Entrez GeneID	4176
Protein Accession#	P33993
Gene Name	MCM7
Gene Alias	CDABP0042, CDC47, MCM2, P1.1-MCM3, P1CDC47, P85MCM, PNAS-146
Gene Description	minichromosome maintenance complex component 7
Omim ID	600592

Gene Ontology

[Hyperlink](#)

Gene Summary

The protein encoded by this gene is one of the highly conserved mini-chromosome maintenance proteins (MCM) that are essential for the initiation of eukaryotic genome replication. The hexameric protein complex formed by the MCM proteins is a key component of the pre-replication complex (pre_RC) and may be involved in the formation of replication forks and in the recruitment of other DNA replication related proteins. The MCM complex consisting of this protein and MCM2, 4 and 6 proteins possesses DNA helicase activity, and may act as a DNA unwinding enzyme. Cyclin D1-dependent kinase, CDK4, is found to associate with this protein, and may regulate the binding of this protein with the tumor suppressor protein RB1/RB. Alternatively spliced transcript variants encoding distinct isoforms have been reported. [provided by RefSeq]

Other Designations

DNA replication licensing factor MCM7|MCM7 minichromosome maintenance deficient 7|homolog of S. cerevisiae Cdc47|minichromosome maintenance deficient 7

Pathway

- [Cell cycle](#)
- [DNA replication](#)

Disease

- [Autistic Disorder](#)
- [Genetic Predisposition to Disease](#)