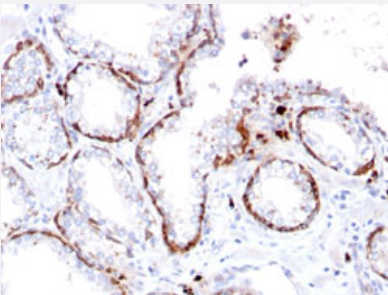


RecomAb™

KRT15 recombinant monoclonal antibody, clone KRT15/2103R

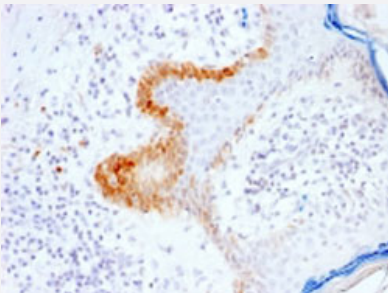
Catalog # RAB00567 Size 100 ug

Applications



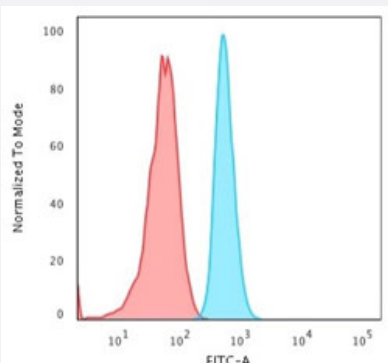
Immunohistochemistry (Formalin/PFA-fixed paraffin-embedded sections)

Immunohistochemical staining of human prostate.



Immunohistochemistry (Formalin/PFA-fixed paraffin-embedded sections)

Immunohistochemical staining of human skin.



Flow Cytometry

Flow cytometric analysis of HeLa cells. Goat anti-rabbit IgG-CF488 (Blue) ; Isotype Control (Red).

Specification

Product Description

Rabbit recombinant monoclonal antibody raised against full length human KRT15.

Antibody Species	Rabbit
Immunogen	Recombinant protein corresponding to full-length human KRT15.
Reactivity	Bovine, Human, Rat
Form	Liquid
Purification	Protein A purification
Isotype	IgG
Recommend Usage	Flow Cytometry (1-2 ug/million cells) Immunohistochemistry (Formalin/PFA-fixed paraffin-embedded sections) (0.5-1 ug/mL) The optimal working dilution should be determined by the end user.
Storage Buffer	In 1 mg/mL PBS
Storage Instruction	Store at -20 to -80°C.

Applications

- Immunohistochemistry (Formalin/PFA-fixed paraffin-embedded sections)
Immunohistochemical staining of human prostate.
- Immunohistochemistry (Formalin/PFA-fixed paraffin-embedded sections)
Immunohistochemical staining of human skin.
- Flow Cytometry
Flow cytometric analysis of HeLa cells. Goat anti-rabbit IgG-CF488 (Blue) ; Isotype Control (Red).

Gene Info — KRT15

Entrez GeneID	3866
Protein Accession#	P19012
Gene Name	KRT15
Gene Alias	CK15, K15, K1CO
Gene Description	keratin 15
Omim ID	148030

Gene Ontology[Hyperlink](#)**Gene Summary**

The protein encoded by this gene is a member of the keratin gene family. The keratins are intermediate filament proteins responsible for the structural integrity of epithelial cells and are subdivided into cytokeratins and hair keratins. Most of the type I cytokeratins consist of acidic proteins which are arranged in pairs of heterotypic keratin chains and are clustered in a region on chromosome 17q21.2. [provided by RefSeq]

Other Designations

OTTHUMP00000165060|cytokeratin 15|keratin-15, basic|keratin-15, beta|type I cytoskeletal 15