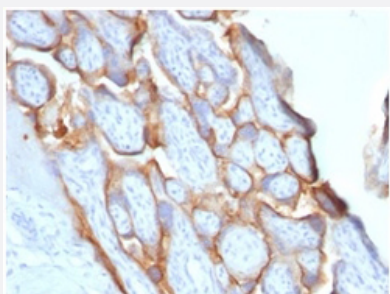


RecomAb™

CGB recombinant monoclonal antibody, clone HCGb/1996R

Catalog # RAB00537 Size 100 ug

Applications



Immunohistochemistry (Formalin/PFA-fixed paraffin-embedded sections)

Immunohistochemical staining of human placenta.

Specification

Product Description	Rabbit recombinant monoclonal antibody raised against full length human CGB.
Antibody Species	Rabbit
Immunogen	Recombinant protein corresponding to full-length human CGB.
Reactivity	Human
Form	Liquid
Purification	Protein A/G purification
Isotype	IgG
Recommend Usage	Immunohistochemistry (Formalin/PFA-fixed paraffin-embedded sections) (0.5-1 ug/mL) The optimal working dilution should be determined by the end user.
Storage Buffer	In 1 mg/mL PBS
Storage Instruction	Store at -20 to -80°C.

Applications

- Immunohistochemistry (Formalin/PFA-fixed paraffin-embedded sections)

Immunohistochemical staining of human placenta.

Gene Info — CGB

Entrez GeneID [1082](#)

Protein Accession# [P01233](#)

Gene Name CGB

Gene Alias CGB3, hCGB

Gene Description chorionic gonadotropin, beta polypeptide

Omim ID [118860](#)

Gene Ontology [Hyperlink](#)

Gene Summary This gene is a member of the glycoprotein hormone beta chain family and encodes the beta 3 subunit of chorionic gonadotropin (CG). Glycoprotein hormones are heterodimers consisting of a common alpha subunit and an unique beta subunit which confers biological specificity. CG is produced by the trophoblastic cells of the placenta and stimulates the ovaries to synthesize the steroids that are essential for the maintenance of pregnancy. The beta subunit of CG is encoded by 6 genes which are arranged in tandem and inverted pairs on chromosome 19q13.3 and contiguous with the luteinizing hormone beta subunit gene. [provided by RefSeq]

Other Designations chorionic gonadotropin beta 3 subunit|chorionic gonadotropin beta chain|chorionic gonadotropin beta subunit

Disease

- [Abortion](#)
- [Genetic Predisposition to Disease](#)