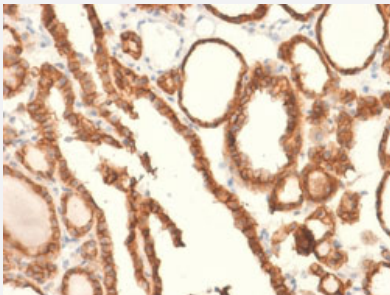


RecomAb™

# TACSTD1 recombinant monoclonal antibody, clone EGP40/2041R

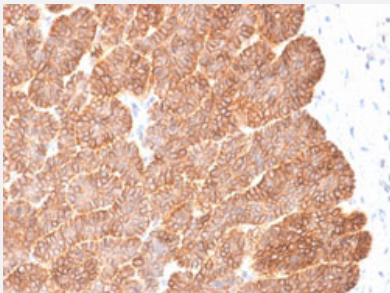
Catalog # RAB00516      Size 100 ug

## Applications



### Immunohistochemistry (Formalin/PFA-fixed paraffin-embedded sections)

Immunohistochemical staining of human thyroid carcinoma.



### Immunohistochemistry (Formalin/PFA-fixed paraffin-embedded sections)

Immunohistochemical staining of human basal cell carcinoma.

## Specification

<b>Product Description</b>	Rabbit recombinant monoclonal antibody raised against partial human TACSTD1.
<b>Antibody Species</b>	Rabbit
<b>Immunogen</b>	Recombinant protein corresponding to amino acids 100-224 at extracellular domain of human TACS TD1.
<b>Reactivity</b>	Human
<b>Form</b>	Liquid
<b>Purification</b>	Protein A purification

Isotype	IgG
Recommend Usage	Immunohistochemistry (Formalin/PFA-fixed paraffin-embedded sections) (0.5-1 ug/mL) The optimal working dilution should be determined by the end user.
Storage Buffer	In 10 mM PBS (0.05% BSA and 0.05% azide)
Storage Instruction	Store at 2 to 8°C.
Note	This product contains sodium azide: a POISONOUS AND HAZARDOUS SUBSTANCE which should be handled by trained staff only.

## Applications

- Immunohistochemistry (Formalin/PFA-fixed paraffin-embedded sections)

Immunohistochemical staining of human thyroid carcinoma.

- Immunohistochemistry (Formalin/PFA-fixed paraffin-embedded sections)

Immunohistochemical staining of human basal cell carcinoma.

## Gene Info — EPCAM

Entrez GeneID	<a href="#">4072</a>
Protein Accession#	<a href="#">P16422</a>
Gene Name	EPCAM
Gene Alias	17-1A, 323/A3, CD326, CO-17A, CO17-1A, EGP, EGP-2, EGP34, EGP40, ESA, Ep-CAM, GA7 33-2, HEA125, KS1/4, KSA, M4S1, MH99, MIC18, MK-1, MOC31, TACST-1, TACSTD1, TROP 1, hEGP-2
Gene Description	epithelial cell adhesion molecule
Omim ID	<a href="#">185535</a>
Gene Ontology	<a href="#">Hyperlink</a>
Gene Summary	This gene encodes a carcinoma-associated antigen and is a member of a family that includes at least two type I membrane proteins. This antigen is expressed on most normal epithelial cells and gastrointestinal carcinomas and functions as a homotypic calcium-independent cell adhesion molecule. The antigen is being used as a target for immunotherapy treatment of human carcinomas. Mutations in this gene result in congenital tufting enteropathy. [provided by RefSeq]

**Other Designations**

adenocarcinoma-associated antigen|carcinoma-associated antigen GA733-2|human epithelial glycoprotein-2|membrane component, chromosome 4, surface marker (35kD glycoprotein)|tumor-associated calcium signal transducer 1

**Disease**

- [Genetic Predisposition to Disease](#)
- [Ovarian Neoplasms](#)