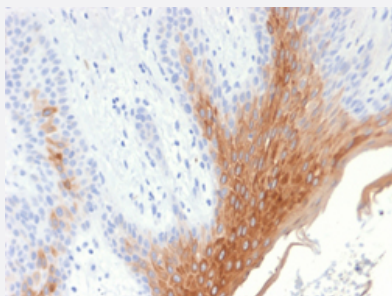


RecomAb™

KRT10 recombinant monoclonal antibody, clone KRT10/1990R

Catalog # RAB00509 Size 100 ug

Applications



Immunohistochemistry (Formalin/PFA-fixed paraffin-embedded sections)

Immunohistochemical staining (Formalin-fixed paraffin-embedded sections) of human skin with KRT10 recombinant monoclonal antibody, clone KRT10/1990R (Cat # RAB00509).

Specification

Product Description	Rabbit recombinant monoclonal antibody raised against full length recombinant human KRT10.
Antibody Species	Rabbit
Immunogen	Original antibody is raised against recombinant protein corresponding to full length human KRT10.
Theoretical MW (kDa)	56.5
Reactivity	Human
Form	Liquid
Purification	Protein A/G purification
Isotype	IgG
Recommend Usage	Immunohistochemistry (Formalin/PFA-fixed paraffin-embedded sections) (1-2 ug/mL) The optimal working dilution should be determined by the end user.
Storage Buffer	In 10 mM PBS (0.05% BSA, 0.05% sodium azide)
Storage Instruction	Store at 4°C.

Note

This product contains sodium azide: a POISONOUS AND HAZARDOUS SUBSTANCE which should be handled by trained staff only.

Applications

- Immunohistochemistry (Formalin/PFA-fixed paraffin-embedded sections)

Immunohistochemical staining (Formalin-fixed paraffin-embedded sections) of human skin with KRT10 recombinant monoclonal antibody, clone KRT10/1990R (Cat # RAB00509).

Gene Info — KRT10

Entrez GeneID [3858](#)

Protein Accession# [P13645](#)

Gene Name KRT10

Gene Alias CK10, K10, KPP

Gene Description keratin 10

Omim ID [113800](#) [148080](#) [600648](#) [607602](#)

Gene Ontology [Hyperlink](#)

Gene Summary This gene encodes a member of the type I (acidic) cytokeratin family, which belongs to the superfamily of intermediate filament (IF) proteins. Keratins are heteropolymeric structural proteins which form the intermediate filament. These filaments, along with actin microfilaments and microtubules, compose the cytoskeleton of epithelial cells. Mutations in this gene are associated with epidermolytic hyperkeratosis. This gene is located within a cluster of keratin family members on chromosome 17q21. [provided by RefSeq]

Other Designations cytokeratin 10