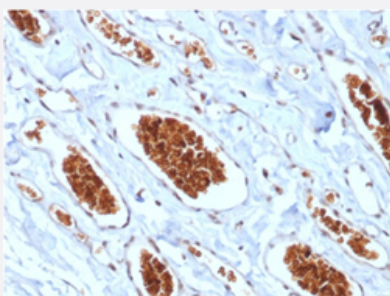


RecomAb™

GYPA recombinant monoclonal antibody, clone rGYPA/280

Catalog # RAB00485 Size 100 ug

Applications



Immunohistochemistry (Formalin/PFA-fixed paraffin-embedded sections)

Immunohistochemical staining (Formalin-fixed paraffin-embedded sections) of human angiosarcoma with GYPA recombinant monoclonal antibody, clone rGYPA/280 (Cat # RAB00485).

Specification

Product Description	Mouse recombinant monoclonal antibody raised against full length recombinant human GYPA.
Antibody Species	Mouse
Immunogen	Original antibody is raised against recombinant protein corresponding to full length human GYPA.
Theoretical MW (kDa)	39
Reactivity	Human
Form	Liquid
Purification	Protein A/G purification
Isotype	IgG1, kappa
Recommend Usage	Immunohistochemistry (Formalin/PFA-fixed paraffin-embedded sections) (0.25-0.5 ug/mL) The optimal working dilution should be determined by the end user.
Storage Buffer	In 10 mM PBS (0.05% BSA, 0.05% sodium azide)
Storage Instruction	Store at 4°C.

Note

This product contains sodium azide: a POISONOUS AND HAZARDOUS SUBSTANCE which should be handled by trained staff only.

Applications

- Immunohistochemistry (Formalin/PFA-fixed paraffin-embedded sections)

Immunohistochemical staining (Formalin-fixed paraffin-embedded sections) of human angiosarcoma with GYPA recombinant monoclonal antibody, clone rGYPA/280 (Cat # RAB00485).

Gene Info — GYPA

Entrez GeneID [2993](#)

Protein Accession# [P02724](#)

Gene Name GYPA

Gene Alias CD235a, GPA, GPERik, GPSAT, GpMiIII, HGpMiIII, HGpMiV, HGpMiX, HGpMiXI, HGpSta(C), MN, MNS

Gene Description glycophorin A (MNS blood group)

Omim ID [111300 611162](#)

Gene Ontology [Hyperlink](#)

Gene Summary Glycophorins A (GYPA) and B (GYPB) are major sialoglycoproteins of the human erythrocyte membrane which bear the antigenic determinants for the MN and Ss blood groups. In addition to the M or N and S or s antigens that commonly occur in all populations, about 40 related variant phenotypes have been identified. These variants include all the variants of the Miltenberger complex and several isoforms of Sta, as well as Dantu, Sat, He, Mg, and deletion variants Ena, S-s-U- and Mk. Most of the variants are the result of gene recombinations between GYPA and GYPB. [provided by RefSeq]

Other Designations Mi.V glycoprotein (24 AA)|erythroid-lineage-specific membrane sialoglycoprotein|glycophorin A|glycophorin A (MN blood group)|glycophorin A MNS blood group|glycophorin A, GPA|glycophorin Erik|glycophorin MiI|glycophorin MiIII|glycophorin MiV|glycophorin Mi

Pathway

- [Hematopoietic cell lineage](#)

Disease

- [Asthma](#)
- [Crohn Disease](#)
- [Genetic Predisposition to Disease](#)
- [Malaria](#)