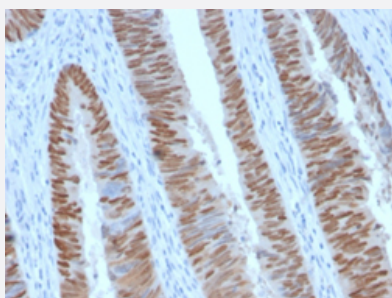


RecomAb™

CDX2 recombinant monoclonal antibody, clone CDX2/2951R

Catalog # RAB00466 Size 100 ug

Applications



Immunohistochemistry (Formalin/PFA-fixed paraffin-embedded sections)

Immunohistochemical staining (Formalin-fixed paraffin-embedded sections) of human colon carcinoma with CDX2 recombinant monoclonal antibody, clone CDX2/2951R (Cat # RAB00466).

Specification

Product Description	Rabbit recombinant monoclonal antibody raised against partial recombinant human CDX2.
Antibody Species	Rabbit
Immunogen	Original antibody is raised against recombinant protein corresponding to amino acids 150-249 of human CDX2.
Theoretical MW (kDa)	40
Reactivity	Human
Form	Liquid
Purification	Protein A/G purification
Isotype	IgG
Recommend Usage	ELISA (2-4 ug/mL) Immunohistochemistry (Formalin/PFA-fixed paraffin-embedded sections) (1-2 ug/mL) The optimal working dilution should be determined by the end user.
Storage Buffer	In 10 mM PBS

Storage Instruction

Store at -20 to -80°C.
Aliquot to avoid repeated freezing and thawing.

Applications

- Immunohistochemistry (Formalin/PFA-fixed paraffin-embedded sections)

Immunohistochemical staining (Formalin-fixed paraffin-embedded sections) of human colon carcinoma with CDX2 recombinant monoclonal antibody, clone CDX2/2951R (Cat # RAB00466).

- Enzyme-linked Immunoabsorbent Assay

Gene Info — CDX2

Entrez GeneID [1045](#)

Protein Accession# [Q99626](#)

Gene Name CDX2

Gene Alias CDX-3, CDX3

Gene Description caudal type homeobox 2

Omim ID [600297](#)

Gene Ontology [Hyperlink](#)

Gene Summary The level and beta-cell specificity of insulin gene expression are regulated by a set of nuclear proteins that bind to specific sequences within the promoter of the insulin gene (INS; MIM 176730) and interact with RNA polymerase to activate or repress transcription. The proteins LMX1 (MIM 600298) and CDX3 are homeodomain proteins that bind an A/T-rich sequence in the insulin promoter and stimulate its transcription (German et al., 1994 [PubMed 7698771]).[supplied by OMIM]

Other Designations OTTHUMP00000018176|caudal type homeo box transcription factor 2|caudal type homeobox transcription factor 2

Disease

- [Colorectal Neoplasms](#)
- [Genetic Predisposition to Disease](#)