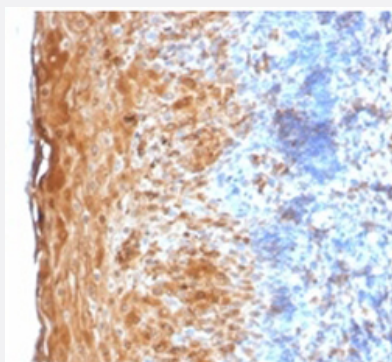


RecomAb™

# IVL recombinant monoclonal antibody, clone IVRN/2113R

Catalog # RAB00464      Size 100 ug

## Applications



### Immunohistochemistry (Formalin/PFA-fixed paraffin-embedded sections)

Immunohistochemical staining of human tonsil.

## Specification

Product Description	Rabbit recombinant monoclonal antibody raised against full length human IVL.
Antibody Species	Rabbit
Immunogen	Recombinant protein corresponding to full-length human IVL.
Reactivity	Dog, Gorilla, Human, Owl Monkey, Pig
Form	Liquid
Purification	Protein A/G purification
Isotype	IgG
Recommend Usage	Immunohistochemistry (Formalin/PFA-fixed paraffin-embedded sections) (1-2 ug/mL for 30 minutes at RT), (Staining of formalin-fixed tissues is enhanced by digestion with trypsin or Protease XXV at 1 mg/mL PBS for 5 min at 37°C)(Note than enzyme digestion is better than citrate buffer based epitope unmasking) Optimal dilution for a specific application should be determined.) The optimal working dilution should be determined by the end user.
Storage Buffer	In 1 mg/mL PBS

**Storage Instruction**

Store at -20 to -80°C.  
Aliquot to avoid repeated freezing and thawing.

## Applications

- Immunohistochemistry (Formalin/PFA-fixed paraffin-embedded sections)

Immunohistochemical staining of human tonsil.

## Gene Info — IVL

**Entrez GeneID** [3713](#)

**Protein Accession#** [P07476](#)

**Gene Name** IVL

**Gene Alias** -

**Gene Description** involucrin

**Omim ID** [147360](#)

**Gene Ontology** [Hyperlink](#)

**Gene Summary** Involucrin, a component of the keratinocyte crosslinked envelope, is found in the cytoplasm and crosslinked to membrane proteins by transglutaminase. This gene is mapped to 1q21, among calpactin I light chain, trichohyalin, profilaggrin, loricrin, and calcyclin. [provided by RefSeq]

**Other Designations** OTTHUMP00000014402

## Disease

- [Dermatitis](#)
- [Genetic Predisposition to Disease](#)