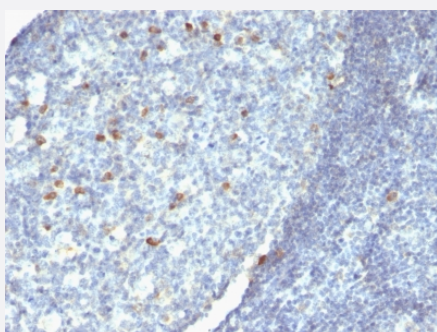


RecomAb™

IGHM recombinant monoclonal antibody, clone rIM373

Catalog # RAB00446 Size 100 ug

Applications



Immunohistochemistry (Formalin/PFA-fixed paraffin-embedded sections)

Immunohistochemical staining (Formalin-fixed paraffin-embedded sections) of human Tonsil using IGHM recombinant monoclonal antibody, clone rIM373.

Specification

Product Description Mouse recombinant monoclonal antibody raised against human IGHM.

Antibody Species Mouse

Immunogen Original antibody is raised against human IgM heavy chain

Reactivity Human

Form Liquid

Purification Protein A/G purification

Isotype IgG1, kappa

Recommend Usage Immunohistochemistry (Formalin-fixed) (0.5-1 ug/mL)
The optimal working dilution should be determined by the end user.

Storage Buffer In 10 mM PBS

Storage Instruction Store at -20 to -80°C.
Aliquot to avoid repeated freezing and thawing.

Note

This product contains sodium azide: a POISONOUS AND HAZARDOUS SUBSTANCE which should be handled by trained staff only.

Applications

- Immunohistochemistry (Formalin/PFA-fixed paraffin-embedded sections)

Immunohistochemical staining (Formalin-fixed paraffin-embedded sections) of human Tonsil using IGHM recombinant monoclonal antibody, clone rIM373.

Gene Info — IGHM

Entrez GeneID [3507](#)

Protein Accession# [P01871 & P20769](#)

Gene Name IGHM

Gene Alias DKFZp686I15196, DKFZp686I15212, FLJ00385, MGC104996, MGC52291, MU, VH

Gene Description immunoglobulin heavy constant mu

Omim ID [147020 601495](#)

Gene Ontology [Hyperlink](#)

Other Designations -

Disease

- [Genetic Predisposition to Disease](#)
- [Lupus Erythematosus](#)