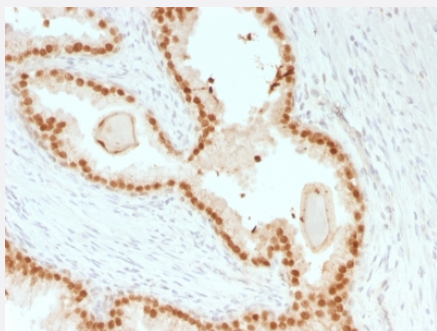


RecomAb™

FOXA1 recombinant monoclonal antibody, clone rFOXA1/1515

Catalog # RAB00430 Size 100 ug

Applications



Immunohistochemistry (Formalin/PFA-fixed paraffin-embedded sections)

Immunohistochemical staining (Formalin-fixed paraffin-embedded sections) of human Prostate Carcinoma using FOXA1 recombinant monoclonal antibody, clone rFOXA1/1515.

Specification

Product Description	Mouse recombinant monoclonal antibody raised against partial recombinant human FOXA1.
Antibody Species	Mouse
Immunogen	Original antibody is raised against recombinant protein corresponding to amino acid 372-472 of human FOXA1.
Reactivity	Human
Form	Liquid
Purification	Protein A/G purification
Isotype	IgG1
Recommend Usage	Immunohistochemistry (Formalin-fixed) (1-2 ug/mL) The optimal working dilution should be determined by the end user.
Storage Buffer	In 10 mM PBS
Storage Instruction	Store at -20 to -80°C. Aliquot to avoid repeated freezing and thawing.

Note

This product contains sodium azide: a POISONOUS AND HAZARDOUS SUBSTANCE which should be handled by trained staff only.

Applications

- Immunohistochemistry (Formalin/PFA-fixed paraffin-embedded sections)

Immunohistochemical staining (Formalin-fixed paraffin-embedded sections) of human Prostate Carcinoma using FOXA1 recombinant monoclonal antibody, clone rFOXA1/1515.

Gene Info — FOXA1

Entrez GeneID [3169](#)

Protein Accession# [P55317](#)

Gene Name FOXA1

Gene Alias HNF3A, MGC33105, TCF3A

Gene Description forkhead box A1

Omim ID [602294](#)

Gene Ontology [Hyperlink](#)

Gene Summary This gene encodes a member of the forkhead class of DNA-binding proteins. These hepatocyte nuclear factors are transcriptional activators for liver-specific transcripts such as albumin and transthyretin, and they also interact with chromatin. Similar family members in mice have roles in the regulation of metabolism and in the differentiation of the pancreas and liver. [provided by RefSeq]

Other Designations hepatocyte nuclear factor 3, alpha

Disease

- [Breast cancer](#)
- [Breast Neoplasms](#)