

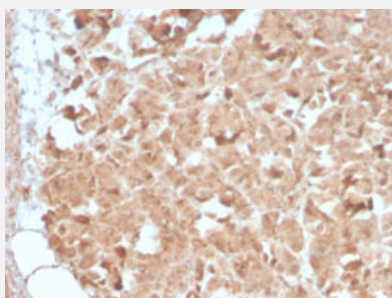
RecomAb™

ELA3B recombinant monoclonal antibody, clone CELA3B/2809R

Catalog # RAB00414

Size 100 ug

Applications



Immunohistochemistry (Formalin/PFA-fixed paraffin-embedded sections)

Immunohistochemical staining (Formalin-fixed paraffin-embedded sections) of human pancreas with ELA3B recombinant monoclonal antibody, clone CELA3B/2809R (Cat # RAB00414).

Specification

Product Description	Rabbit recombinant monoclonal antibody raised against human ELA3B.
Antibody Species	Rabbit
Immunogen	Original antibody is raised against recombinant protein corresponding to amino acids 82-238 of human ELA3B.
Theoretical MW (kDa)	~17
Reactivity	Human
Form	Liquid
Purification	Protein A/G purification
Isotype	IgG
Recommend Usage	Immunohistochemistry (Formalin/PFA-fixed paraffin-embedded sections) (1-2 ug/mL) The optimal working dilution should be determined by the end user.
Storage Buffer	In 10 mM PBS

Storage Instruction

Store at -20 to -80°C.
Aliquot to avoid repeated freezing and thawing.

Applications

- Immunohistochemistry (Formalin/PFA-fixed paraffin-embedded sections)

Immunohistochemical staining (Formalin-fixed paraffin-embedded sections) of human pancreas with ELA3B recombinant monoclonal antibody, clone CELA3B/2809R (Cat # RAB00414).

Gene Info — ELA3B

Entrez GeneID [23436](#)

Protein Accession# [P08861](#)

Gene Name ELA3B

Gene Alias -

Gene Description elastase 3B, pancreatic

Gene Ontology [Hyperlink](#)

Gene Summary Elastases form a subfamily of serine proteases that hydrolyze many proteins in addition to elastin. Humans have six elastase genes which encode the structurally similar proteins elastase 1, 2, 2A, 2B, 3A, and 3B. Unlike other elastases, elastase 3B has little elastolytic activity. Like most of the human elastases, elastase 3B is secreted from the pancreas as a zymogen and, like other serine proteases such as trypsin, chymotrypsin and kallikrein, it has a digestive function in the intestine. Elastase 3B preferentially cleaves proteins after alanine residues. Elastase 3B may also function in the intestinal transport and metabolism of cholesterol. Both elastase 3A and elastase 3B have been referred to as protease E and as elastase 1, and excretion of this protein in fecal material is frequently used as a measure of pancreatic function in clinical assays. [provided by RefSeq]

Other Designations OTTHUMP00000002837|elastase 1|elastase 3B|protease E