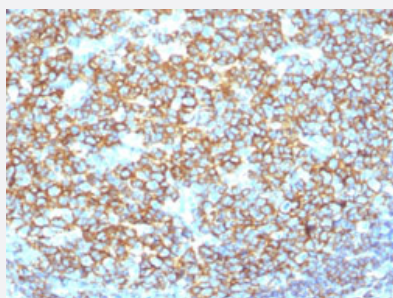


RecomAb™

MS4A1 recombinant monoclonal antibody, clone IGEL/1497R

Catalog # RAB00365 Size 100 ug

Applications



Immunohistochemistry (Formalin/PFA-fixed paraffin-embedded sections)

Immunohistochemical staining (Formalin-fixed paraffin-embedded sections) of human tonsil with MS4A1 recombinant monoclonal antibody, clone IGEL/1497R (Cat # RAB00365).

Specification

Product Description	Rabbit recombinant monoclonal antibody raised against human MS4A1.
Antibody Species	Rabbit
Immunogen	Original antibody is raised against recombinant protein corresponding to full length human MS4A1.
Theoretical MW (kDa)	33-37
Reactivity	Human
Form	Liquid
Purification	Protein A purification
Isotype	IgG, kappa
Recommend Usage	Flow Cytometry (0.5-1 ug/10 ⁶ cells) Immunofluorescence (0.5-1 ug/mL) Immunohistochemistry (Formalin/PFA-fixed paraffin-embedded sections) (0.5-1 ug/mL) The optimal working dilution should be determined by the end user.
Storage Buffer	In 10 mM PBS (0.05% BSA, 0.05% sodium azide)

Storage Instruction

Store at 4°C.

Note

This product contains sodium azide: a POISONOUS AND HAZARDOUS SUBSTANCE which should be handled by trained staff only.

Applications

- Immunohistochemistry (Formalin/PFA-fixed paraffin-embedded sections)

Immunohistochemical staining (Formalin-fixed paraffin-embedded sections) of human tonsil with MS4A1 recombinant monoclonal antibody, clone IGEL/1497R (Cat # RAB00365).

- Immunofluorescence

- Flow Cytometry

Gene Info — MS4A1

Entrez GeneID[931](#)**Protein Accession#**[P11836](#)**Gene Name**

MS4A1

Gene Alias

B1, Bp35, CD20, LEU-16, MGC3969, MS4A2, S7

Gene Description

membrane-spanning 4-domains, subfamily A, member 1

Omim ID[112210](#)**Gene Ontology**[Hyperlink](#)**Gene Summary**

This gene encodes a member of the membrane-spanning 4A gene family. Members of this nascent protein family are characterized by common structural features and similar intron/exon splice boundaries and display unique expression patterns among hematopoietic cells and nonlymphoid tissues. This gene encodes a B-lymphocyte surface molecule which plays a role in the development and differentiation of B-cells into plasma cells. This family member is localized to 11q12, among a cluster of family members. Alternative splicing of this gene results in two transcript variants which encode the same protein. [provided by RefSeq]

Other Designations

B-lymphocyte cell-surface antigen B1|CD20 antigen|CD20 receptor

Publication Reference

- [CD20: a regulator of cell-cycle progression of B lymphocytes.](#)

Tedder TF, Engel P.

Immunology Today 1994 Sep; 15(9):450.

Pathway

- [Hematopoietic cell lineage](#)

Disease

- [Breast cancer](#)
- [Breast Neoplasms](#)
- [Genetic Predisposition to Disease](#)
- [Lymphoma](#)
- [Neoplasm Recurrence](#)
- [Ovarian cancer](#)