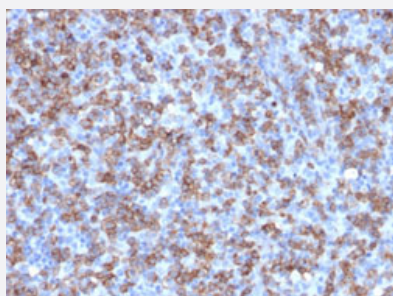


RecomAb™

CD8A recombinant monoclonal antibody, clone C8/1779R

Catalog # RAB00363 Size 100 ug

Applications



Immunohistochemistry (Formalin/PFA-fixed paraffin-embedded sections)

Immunohistochemical staining (Formalin-fixed paraffin-embedded sections) of human lymphoma with CD8A recombinant monoclonal antibody, clone C8/1779R (Cat # RAB00363).

Specification

Product Description	Rabbit recombinant monoclonal antibody raised against human CD8A.
Antibody Species	Rabbit
Immunogen	Original antibody is raised against recombinant protein corresponding to full length human CD8A.
Theoretical MW (kDa)	32
Reactivity	Human
Form	Liquid
Purification	Protein A purification
Isotype	IgG, kappa
Recommend Usage	Flow Cytometry (0.5-1 ug/10 ⁶ cells) Immunofluorescence (2-4 ug/mL) Immunohistochemistry (Formalin/PFA-fixed paraffin-embedded sections) (1-2 ug/mL) The optimal working dilution should be determined by the end user.
Storage Buffer	In 10 mM PBS (0.05% BSA, 0.05% sodium azide)

Storage Instruction

Store at 4°C.

Note

This product contains sodium azide: a POISONOUS AND HAZARDOUS SUBSTANCE which should be handled by trained staff only.

Applications

- Immunohistochemistry (Formalin/PFA-fixed paraffin-embedded sections)

Immunohistochemical staining (Formalin-fixed paraffin-embedded sections) of human lymphoma with CD8A recombinant monoclonal antibody, clone C8/1779R (Cat # RAB00363).

- Immunofluorescence

- Flow Cytometry

Gene Info — CD8A

Entrez GeneID[925](#)**Protein Accession#**[P01732](#)**Gene Name**

CD8A

Gene Alias

CD8, Leu2, MAL, p32

Gene Description

CD8a molecule

Omim ID[186910 608957](#)**Gene Ontology**[Hyperlink](#)**Gene Summary**

The CD8 antigen is a cell surface glycoprotein found on most cytotoxic T lymphocytes that mediates efficient cell-cell interactions within the immune system. The CD8 antigen acts as a coreceptor with the T-cell receptor on the T lymphocyte to recognize antigens displayed by an antigen presenting cell (APC) in the context of class I MHC molecules. The coreceptor functions as either a homodimer composed of two alpha chains, or as a heterodimer composed of one alpha and one beta chain. Both alpha and beta chains share significant homology to immunoglobulin variable light chains. This gene encodes the CD8 alpha chain isoforms. Multiple transcript variants encoding different isoforms have been found for this gene. [provided by RefSeq]

Other Designations

CD8 antigen alpha polypeptide|CD8 antigen, alpha polypeptide (p32)|Leu2 T-lymphocyte antigen|OKT8 T-cell antigen|T cell co-receptor|T-cell antigen Leu2|T-cell surface glycoprotein CD8 alpha chain|T-lymphocyte differentiation antigen T8/Leu-2|T8 T-cell ant

Publication Reference

- [Immunohistological detection of human cytotoxic/suppressor T cells using antibodies to a CD8 peptide sequence.](#)

Mason DY, Cordell JL, Gaulard P, Tse AG, Brown MH.

Journal of Clinical Pathology 1992 Dec; 45(12):1084.

Application: IHC-Fr, IHC-P, IP, Human, B cell lymphomas, Human T lymphoblasts

Pathway

- [Antigen processing and presentation](#)
- [Cell adhesion molecules \(CAMs\)](#)
- [Hematopoietic cell lineage](#)
- [Primary immunodeficiency](#)
- [T cell receptor signaling pathway](#)