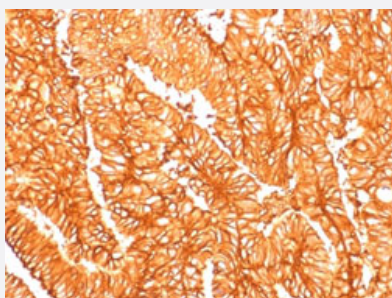


RecomAb™

# EPCAM recombinant monoclonal antibody, clone EGP40/1556R

Catalog # RAB00342      Size 100 ug

## Applications



### Immunohistochemistry (Formalin/PFA-fixed paraffin-embedded sections)

Immunohistochemical staining (Formalin-fixed paraffin-embedded sections) of human colon cancer with EPCAM recombinant monoclonal antibody, clone EGP40/1556R (Cat # RAB00342).

## Specification

<b>Product Description</b>	Rabbit recombinant monoclonal antibody raised against human EPCAM.
<b>Antibody Species</b>	Rabbit
<b>Immunogen</b>	Original antibody is raised against recombinant protein corresponding to full length human EPCAM.
<b>Theoretical MW (kDa)</b>	40-43
<b>Reactivity</b>	Human
<b>Form</b>	Liquid
<b>Purification</b>	Protein A purification
<b>Isotype</b>	IgG, kappa
<b>Recommend Usage</b>	Flow Cytometry (0.5-1 ug/10 <sup>6</sup> cells) Immunofluorescence (1-2 ug/mL) Immunohistochemistry (Formalin/PFA-fixed paraffin-embedded sections) (0.5-1 ug/mL) Western Blotting (0.5-1 ug/mL) The optimal working dilution should be determined by the end user.

**Storage Buffer**

In 10 mM PBS

**Storage Instruction**

Store at -20 to -80°C.  
Aliquot to avoid repeated freezing and thawing.

## Applications

- Western Blot
- Immunohistochemistry (Formalin/PFA-fixed paraffin-embedded sections)  

Immunohistochemical staining (Formalin-fixed paraffin-embedded sections) of human colon cancer with EPCAM recombinant monoclonal antibody, clone EGP40/1556R (Cat # RAB00342).
- Immunofluorescence
- Flow Cytometry

## Gene Info — EPCAM

**Entrez GeneID**[4072](#)**Protein Accession#**[P16422](#)**Gene Name**

EPCAM

**Gene Alias**

17-1A, 323/A3, CD326, CO-17A, CO17-1A, EGP, EGP-2, EGP34, EGP40, ESA, Ep-CAM, GA7 33-2, HEA125, KS1/4, KSA, M4S1, MH99, MIC18, MK-1, MOC31, TACST-1, TACSTD1, TROP 1, hEGP-2

**Gene Description**

epithelial cell adhesion molecule

**Omim ID**[185535](#)**Gene Ontology**[Hyperlink](#)**Gene Summary**

This gene encodes a carcinoma-associated antigen and is a member of a family that includes at least two type I membrane proteins. This antigen is expressed on most normal epithelial cells and gastrointestinal carcinomas and functions as a homotypic calcium-independent cell adhesion molecule. The antigen is being used as a target for immunotherapy treatment of human carcinomas. Mutations in this gene result in congenital tufting enteropathy. [provided by RefSeq]

**Other Designations**

adenocarcinoma-associated antigen|carcinoma-associated antigen GA733-2|human epithelial glycoprotein-2|membrane component, chromosome 4, surface marker (35kD glycoprotein)|tumor-associated calcium signal transducer 1

## Publication Reference

- [Isolation, partial characterization, and molecular cloning of a human colon adenocarcinoma cell-surface glycoprotein recognized by the C215 mouse monoclonal antibody.](#)

Björk P, Jönsson U, Svedberg H, Larsson K, Lind P, Dillner J, Hedlund G, Dohlsten M, Kalland T.

The Journal of Biological Chemistry 1993 Nov; 268(32):24232.

## Disease

- [Genetic Predisposition to Disease](#)
- [Ovarian Neoplasms](#)