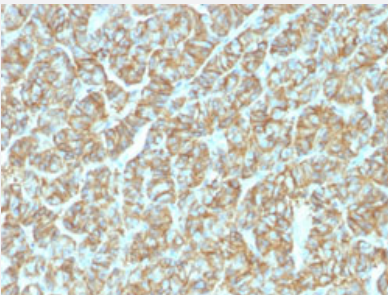


RecomAb™

EPCAM recombinant monoclonal antibody, clone EGP40/1555R

Catalog # RAB00340 Size 100 ug

Applications



Immunohistochemistry (Formalin/PFA-fixed paraffin-embedded sections)

Immunohistochemical staining (Formalin-fixed paraffin-embedded sections) of human thyroid carcinoma with EPCAM recombinant monoclonal antibody, clone EGP40/1555R (Cat # RAB00340).

Specification

Product Description	Rabbit recombinant monoclonal antibody raised against human EPCAM.
Antibody Species	Rabbit
Immunogen	Original antibody is raised against a synthetic peptide corresponding to amino acids 20-60 at N-terminus of human EPCAM.
Theoretical MW (kDa)	40-43
Reactivity	Human
Form	Liquid
Purification	Protein A purification
Isotype	IgG, kappa

Recommend Usage

Flow Cytometry (0.5-1 ug/10⁶ cells)
Immunofluorescence (1-2 ug/mL)
Immunohistochemistry (Formalin/PFA-fixed paraffin-embedded sections) (1-2 ug/mL)
Western Blotting (0.5-1 ug/mL)
The optimal working dilution should be determined by the end user.

Storage Buffer

In 10 mM PBS

Storage Instruction

Store at -20 to -80°C.
Aliquot to avoid repeated freezing and thawing.

Applications

- Western Blot
- Immunohistochemistry (Formalin/PFA-fixed paraffin-embedded sections)
Immunohistochemical staining (Formalin-fixed paraffin-embedded sections) of human thyroid carcinoma with EPCAM recombinant monoclonal antibody, clone EGP40/1555R (Cat # RAB00340).
- Immunofluorescence
- Flow Cytometry

Gene Info — EPCAM

Entrez GeneID

[4072](#)

Protein Accession#

[P16422](#)

Gene Name

EPCAM

Gene Alias

17-1A, 323/A3, CD326, CO-17A, CO17-1A, EGP, EGP-2, EGP34, EGP40, ESA, Ep-CAM, GA7 33-2, HEA125, KS1/4, KSA, M4S1, MH99, MIC18, MK-1, MOC31, TACST-1, TACSTD1, TROP 1, hEGP-2

Gene Description

epithelial cell adhesion molecule

Omim ID

[185535](#)

Gene Ontology

[Hyperlink](#)

Gene Summary

This gene encodes a carcinoma-associated antigen and is a member of a family that includes at least two type I membrane proteins. This antigen is expressed on most normal epithelial cells and gastrointestinal carcinomas and functions as a homotypic calcium-independent cell adhesion molecule. The antigen is being used as a target for immunotherapy treatment of human carcinomas. Mutations in this gene result in congenital tufting enteropathy. [provided by RefSeq]

Other Designations

adenocarcinoma-associated antigen|carcinoma-associated antigen GA733-2|human epithelial glycoprotein-2|membrane component, chromosome 4, surface marker (35kD glycoprotein)|tumor-associated calcium signal transducer 1

Publication Reference

- [Isolation, partial characterization, and molecular cloning of a human colon adenocarcinoma cell-surface glycoprotein recognized by the C215 mouse monoclonal antibody.](#)

Björk P, Jönsson U, Svedberg H, Larsson K, Lind P, Dillner J, Hedlund G, Dohlsten M, Kalland T.

The Journal of Biological Chemistry 1993 Nov; 268(32):24232.

Disease

- [Genetic Predisposition to Disease](#)
- [Ovarian Neoplasms](#)