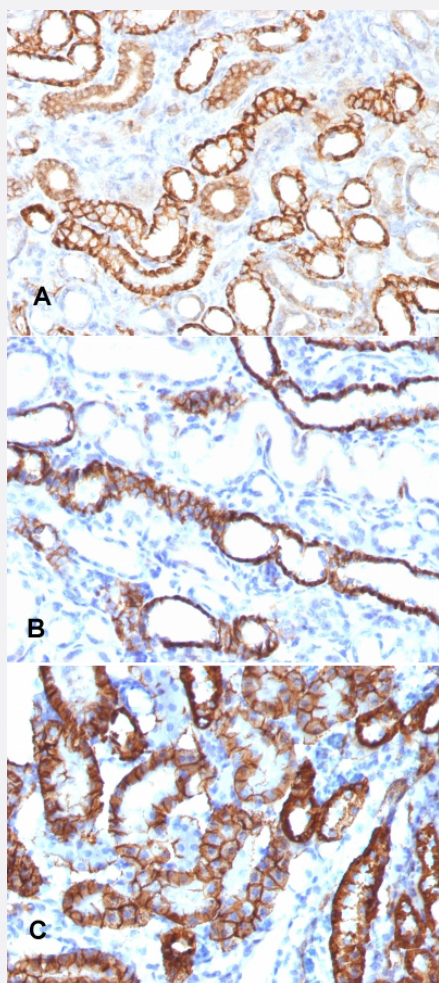


RecomAb™

CDH16 recombinant monoclonal antibody, clone CDH16/1532R

Catalog # RAB00315 Size 100 ug

Applications



Immunohistochemistry (Formalin/PFA-fixed paraffin-embedded sections)

Immunohistochemical staining (Formalin-fixed paraffin-embedded sections) of (A) human renal cell carcinoma (B) rat kidney and (C) mouse kidney with CDH16 recombinant monoclonal antibody, clone CDH16/1532R (Cat # RAB00315).

Specification

| | |
|---------------------|---|
| Product Description | Rabbit recombinant monoclonal antibody raised against human CDH16. |
| Antibody Species | Rabbit |
| Immunogen | Original antibody is raised against recombinant protein corresponding to full length human CDH16. |

| | |
|----------------------|---|
| Theoretical MW (kDa) | 130 |
| Reactivity | Human, Mouse, Rat |
| Form | Liquid |
| Purification | Protein A purification |
| Isotype | IgG, kappa |
| Recommend Usage | Flow Cytometry (0.5-1 ug/million cells) Immunofluorescence (1-2 ug/mL) Immunohistochemistry (Formalin/PFA-fixed paraffin-embedded sections) (0.5-1 ug/mL) The optimal working dilution should be determined by the end user. |
| Storage Buffer | In 10 mM PBS (0.05% BSA and 0.05% azide) |
| Storage Instruction | Store at 4°C. |
| Note | This product contains sodium azide: a POISONOUS AND HAZARDOUS SUBSTANCE which should be handled by trained staff only. |

Applications

- Immunohistochemistry (Formalin/PFA-fixed paraffin-embedded sections)

Immunohistochemical staining (Formalin-fixed paraffin-embedded sections) of (A) human renal cell carcinoma (B) rat kidney and (C) mouse kidney with CDH16 recombinant monoclonal antibody, clone CDH16/1532R (Cat # RAB00315).

- Immunofluorescence
- Flow Cytometry

Gene Info — CDH16

| | |
|--------------------|---------------------------|
| Entrez GeneID | 1014 |
| Protein Accession# | O75309 |
| Gene Name | CDH16 |
| Gene Alias | - |
| Gene Description | cadherin 16, KSP-cadherin |
| Omim ID | 603118 |

Gene Ontology

[Hyperlink](#)

Gene Summary

This gene is a member of the cadherin superfamily, genes encoding calcium-dependent, membrane-associated glycoproteins. Mapped to a previously identified cluster of cadherin genes on chromosome 16q22.1, the gene localizes with superfamily members CDH1, CDH3, CDH5, CDH8 and CDH11. The protein consists of an extracellular domain containing 6 cadherin domains, a transmembrane region and a truncated cytoplasmic domain but lacks the prosequence and tripeptide HAV adhesion recognition sequence typical of most classical cadherins. Expression is exclusively in kidney, where the protein functions as the principal mediator of homotypic cellular recognition, playing a role in the morphogenic direction of tissue development. [provided by RefSeq]

Other Designations

KSP-cadherin|cadherin 16|kidney-specific cadherin

Publication Reference

- [Kidney-specific cadherin, a specific marker for the distal portion of the nephron and related renal neoplasms.](#)

Shen SS, Krishna B, Chirala R, Amato RJ, Truong LD.

Modern Pathology 2005 Jul; 18(7):933.

Application: IHC-P, Human, Human renal neoplasms

- [Expression of kidney-specific cadherin distinguishes chromophobe renal cell carcinoma from renal oncocytoma.](#)

Mazal PR, Exner M, Haitel A, Krieger S, Thomson RB, Aronson PS, Susani M.

Human Pathology 2005 Jan; 36(1):22.

Application: IHC-P, WB-Ti, Human, Chromophobe renal cell carcinoma, Renal oncocytoma