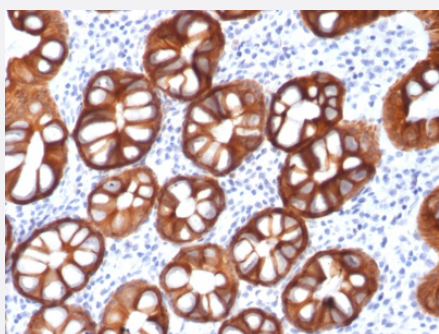


RecomAb™

EPCAM recombinant monoclonal antibody, clone rMOC-31

Catalog # RAB00303 Size 100 ug

Applications



Immunohistochemistry (Formalin/PFA-fixed paraffin-embedded sections)

Immunohistochemical staining (Formalin-fixed paraffin-embedded sections) of human colon carcinoma with EPCAM recombinant monoclonal antibody, clone rMOC-31 (Cat # RAB00303).

Specification

Product Description	Mouse recombinant monoclonal antibody raised against human EPCAM.
Antibody Species	Mouse
Immunogen	Neuraminidase treated GLS-1 human small cell lung carcinoma cells.
Theoretical MW (kDa)	40-43
Reactivity	Human
Form	Liquid
Purification	Protein A/G purification
Isotype	IgG1, kappa
Recommend Usage	Flow Cytometry (0.5-1 ug/million cells) Immunofluorescence (1-2 ug/mL) Immunohistochemistry (Formalin/PFA-fixed paraffin-embedded sections) (0.5-1 ug/mL) Western Blot (0.5-1 ug/mL) The optimal working dilution should be determined by the end user.

Storage Buffer	In 10 mM PBS (0.05% BSA and 0.05% azide)
Storage Instruction	Store at 4°C.
Note	This product contains sodium azide: a POISONOUS AND HAZARDOUS SUBSTANCE which should be handled by trained staff only.

Applications

- Immunohistochemistry (Formalin/PFA-fixed paraffin-embedded sections)

Immunohistochemical staining (Formalin-fixed paraffin-embedded sections) of human colon carcinoma with EPCAM recombinant monoclonal antibody, clone rMOC-31 (Cat # RAB00303).

- Immunofluorescence

- Flow Cytometry

Gene Info — EPCAM

Entrez GeneID	4072
Protein Accession#	P16422
Gene Name	EPCAM
Gene Alias	17-1A, 323/A3, CD326, CO-17A, CO17-1A, EGP, EGP-2, EGP34, EGP40, ESA, Ep-CAM, GA733-2, HEA125, KS1/4, KSA, M4S1, MH99, MIC18, MK-1, MOC31, TACST-1, TACSTD1, TROP1, hEGP-2
Gene Description	epithelial cell adhesion molecule
Omim ID	185535
Gene Ontology	Hyperlink
Gene Summary	This gene encodes a carcinoma-associated antigen and is a member of a family that includes at least two type I membrane proteins. This antigen is expressed on most normal epithelial cells and gastrointestinal carcinomas and functions as a homotypic calcium-independent cell adhesion molecule. The antigen is being used as a target for immunotherapy treatment of human carcinomas. Mutations in this gene result in congenital tufting enteropathy. [provided by RefSeq]
Other Designations	adenocarcinoma-associated antigen carcinoma-associated antigen GA733-2 human epithelial glycoprotein-2 membrane component, chromosome 4, surface marker (35kD glycoprotein) tumor-associated calcium signal transducer 1

Publication Reference

- [The epithelial cell adhesion molecule \(Ep-CAM\) as a morphoregulatory molecule is a tool in surgical pathology.](#)

Winter MJ, Nagtegaal ID, van Krieken JH, Litvinov SV.

The American Journal of Pathology 2003 Dec; 163(6):2139.

- [Diagnostic application of a monoclonal antibody against small cell lung cancer.](#)

P E Postmus, T J Hirschler-Schulte, L De Leij, S Poppema, J E Elema, E T Edens, G Mesander, H J Sluiter, T H The.

Cancer 1986 Jan; 57(1):60.

Application: IHC-Fr, Human, Human bronchoscope biopsies, Human lung cancer

Disease

- [Genetic Predisposition to Disease](#)
- [Ovarian Neoplasms](#)