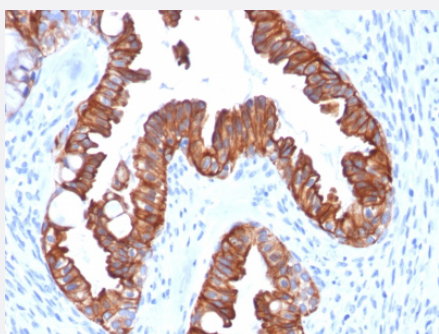


RecomAb™

KRT7 recombinant monoclonal antibody, clone rOV-TL12/30

Catalog # RAB00302 Size 100 ug

Applications



Immunohistochemistry (Formalin/PFA-fixed paraffin-embedded sections)

Immunohistochemical staining (Formalin-fixed paraffin-embedded sections) of human endometrial carcinoma with KRT7 recombinant monoclonal antibody, clone rOV-TL12/30 (Cat # RAB00302).

Specification

Product Description	Mouse recombinant monoclonal antibody raised against human KRT7.
Antibody Species	Mouse
Immunogen	OTN 11 ovarian carcinoma cell line
Theoretical MW (kDa)	55
Reactivity	Human
Specificity	This antibody is highly specific to KRT7 and shows no cross-reaction with other IFPs (intermediate filament proteins).
Form	Liquid
Purification	Protein A/G purification
Isotype	IgG1

Recommend Usage	Flow Cytometry (0.5-1 ug/million cells) Immunofluorescence (0.5-1 ug/mL) Immunohistochemistry (Formalin/PFA-fixed paraffin-embedded sections) (0.5-1 ug/mL) The optimal working dilution should be determined by the end user.
------------------------	---

Storage Buffer	In 10 mM PBS
-----------------------	--------------

Storage Instruction	Store at -20°C. Aliquot to avoid repeated freezing and thawing.
----------------------------	--

Applications

- Immunohistochemistry (Formalin/PFA-fixed paraffin-embedded sections)

Immunohistochemical staining (Formalin-fixed paraffin-embedded sections) of human endometrial carcinoma with KRT7 recombinant monoclonal antibody, clone rOV-TL12/30 (Cat # RAB00302).

- Immunofluorescence

- Flow Cytometry

Gene Info — KRT7

Entrez GeneID	3855
----------------------	----------------------

Protein Accession#	P08729
---------------------------	------------------------

Gene Name	KRT7
------------------	------

Gene Alias	CK7, K2C7, K7, MGC129731, MGC3625, SCL
-------------------	--

Gene Description	keratin 7
-------------------------	-----------

Omim ID	148059
----------------	------------------------

Gene Ontology	Hyperlink
----------------------	---------------------------

Gene Summary	The protein encoded by this gene is a member of the keratin gene family. The type II cytokeratins consist of basic or neutral proteins which are arranged in pairs of heterotypic keratin chains coexpressed during differentiation of simple and stratified epithelial tissues. This type II cytokeratin is specifically expressed in the simple epithelia lining the cavities of the internal organs and in the gland ducts and blood vessels. The genes encoding the type II cytokeratins are clustered in a region of chromosome 12q12-q13. Alternative splicing may result in several transcript variants; however, not all variants have been fully described. [provided by RefSeq]
---------------------	---

Other Designations

cytokeratin 7|keratin, 55K type II cytoskeletal|keratin, simple epithelial type I, K7|keratin, type II cytoskeletal 7|sarcolectin|type II mesothelial keratin K7

Publication Reference

- [Use of monoclonal antibodies to keratin 7 in the differential diagnosis of adenocarcinomas.](#)

Ramaekers F, van Niekerk C, Poels L, Schaafsma E, Huijsmans A, Robben H, Schaart G, Vooijs P.

The American Journal of Pathology 1990 Mar; 136(3):641.

Application: IHC, WB-Ti, Human, Malignant epithelial tissues