

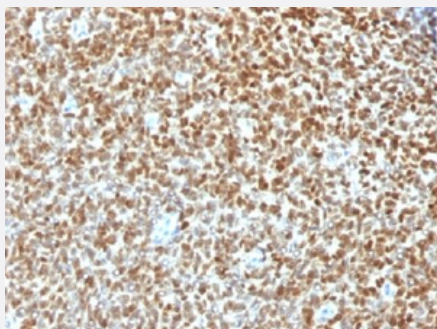
RecomAb™

NKX2-2 recombinant monoclonal antibody, clone NX2/1422R

Catalog # RAB00284

Size 100 ug

Applications



Immunohistochemistry (Formalin/PFA-fixed paraffin-embedded sections)

Immunohistochemical staining (Formalin-fixed paraffin-embedded sections) of human ewing's sarcoma with NKX2-2 recombinant monoclonal antibody, clone NX2/1422R (Cat # RAB00284).

Specification

Product Description	Rabbit recombinant monoclonal antibody raised against human NKX2-2.
Antibody Species	Rabbit
Immunogen	Original antibody is raised against recombinant protein corresponding to human NKX2-2.
Reactivity	Human
Form	Liquid
Purification	Protein A purification
Isotype	IgG, kappa
Recommend Usage	Flow Cytometry (0.5-1 ug/million cells) Immunofluorescence (1-2 ug/mL) Immunohistochemistry (Formalin/PFA-fixed paraffin-embedded sections) (1-2 ug/mL) The optimal working dilution should be determined by the end user.
Storage Buffer	In 10 mM PBS

Storage Instruction

Store at 4°C. For long term storage store at -20°C.
Aliquot to avoid repeated freezing and thawing.

Applications

- Immunohistochemistry (Formalin/PFA-fixed paraffin-embedded sections)

Immunohistochemical staining (Formalin-fixed paraffin-embedded sections) of human ewing's sarcoma with NKX2-2 recombinant monoclonal antibody, clone NX2/1422R (Cat # RAB00284).

- Immunofluorescence
- Flow Cytometry

Gene Info — NKX2-2

Entrez GeneID [4821](#)

Protein Accession# [O95096](#)

Gene Name NKX2-2

Gene Alias NKX2.2, NKX2B

Gene Description NK2 homeobox 2

Omim ID [604612](#)

Gene Ontology [Hyperlink](#)

Gene Summary The protein encoded by this gene contains a homeobox domain and may be involved in the morphogenesis of the central nervous system. This gene is found on chromosome 20 near NKX2-4, and these two genes appear to be duplicated on chromosome 14 in the form of TITF1 and NKX2-8. The encoded protein is likely to be a nuclear transcription factor. [provided by RefSeq]

Other Designations NK-2 homolog B|NK2 transcription factor related, locus 2|NK2 transcription factor-like protein B|O TTHUMP00000030405|homeobox protein NK-2 homolog B

Publication Reference

- [NKX2.2 Is a Useful Immunohistochemical Marker for Ewing Sarcoma.](#)

Yoshida A, Sekine S, Tsuta K, Fukayama M, Furuta K, Tsuda H.

The American Journal of Surgical Pathology 2012 Jul; 36(7):993.

- [Homeodomain transcription factor NKX2 2 functions in immature cells to control enteroendocrine differentiation and is expressed in gastrointestinal neuroendocrine tumors.](#)

Wang YC, Gallego-Arteche E, Iezza G, Yuan X, Matli MR, Choo SP, Zuraek MB, Gogia R, Lynn FC, German MS, Bergsland EK, Donner DB, Warren RS, Nakakura EK .

Endocrine-Related Cancer 2009 Mar; 16(1):267.

Pathway

- [Maturity onset diabetes of the young](#)

Disease

- [Diabetes Mellitus](#)