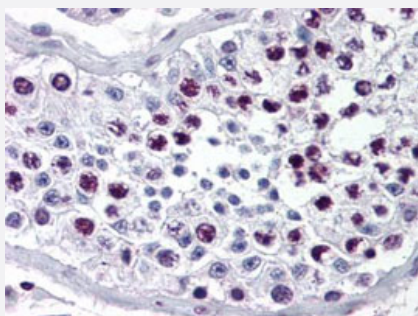


CCNA2 polyclonal antibody

Catalog # PAB9996 Size 100 uL

Applications



Immunohistochemistry (Formalin/PFA-fixed paraffin-embedded sections)

Immunohistochemical staining with CCNA2 polyclonal antibody (Cat # PAB9996) was diluted 1 : 500 to detect CCNA2 in human testis tissue. Tissue was formalin fixed and paraffin embedded. No pre-treatment of sample was required. The image shows the localization of antibody as the precipitated red signal, with a hematoxylin purple nuclear counter stain.

Specification

Product Description	Rabbit polyclonal antibody raised against synthetic peptide of CCNA2.
Immunogen	A synthetic peptide corresponding to human CCNA2.
Host	Rabbit
Reactivity	Human, Mouse, Rat
Form	Liquid
Quality Control Testing	Antibody Reactive Against Synthetic Peptide.
Recommend Usage	ELISA (1:500-1:2000) Western Blot (1:250-1:500) The optimal working dilution should be determined by the end user.
Storage Buffer	In antiserum (0.01% sodium azide)
Storage Instruction	Store at 4°C. For long term storage store at -20°C. Aliquot to avoid repeated freezing and thawing.
Note	This product contains sodium azide: a POISONOUS AND HAZARDOUS SUBSTANCE which should be handled by trained staff only.

Applications

- Western Blot
- Immunohistochemistry (Formalin/PFA-fixed paraffin-embedded sections)

Immunohistochemical staining with CCNA2 polyclonal antibody (Cat # PAB9996) was diluted 1 : 500 to detect CCNA2 in human testis tissue. Tissue was formalin fixed and paraffin embedded. No pre-treatment of sample was required. The image shows the localization of antibody as the precipitated red signal, with a hematoxylin purple nuclear counter stain.

- Immunoprecipitation
- Enzyme-linked Immunoabsorbent Assay

Gene Info — CCNA2

Entrez GeneID [890](#)

Gene Name CCNA2

Gene Alias CCN1, CCNA

Gene Description cyclin A2

Omim ID [123835](#)

Gene Ontology [Hyperlink](#)

Gene Summary The protein encoded by this gene belongs to the highly conserved cyclin family, whose members are characterized by a dramatic periodicity in protein abundance through the cell cycle. Cyclins function as regulators of CDK kinases. Different cyclins exhibit distinct expression and degradation patterns which contribute to the temporal coordination of each mitotic event. In contrast to cyclin A1, which is present only in germ cells, this cyclin is expressed in all tissues tested. This cyclin binds and activates CDC2 or CDK2 kinases, and thus promotes both cell cycle G1/S and G2/M transitions. [provided by RefSeq]

Other Designations cyclin A

Publication Reference

- [Human cyclin A is adenovirus E1A-associated protein p60 and behaves differently from cyclin B.](#)

Pines J, Hunter T.

Nature 1990 Aug; 346(6286):760.

- [Hepatitis B virus integration in a cyclin A gene in a hepatocellular carcinoma.](#)

Wang J, Chenivresse X, Henglein B, Brechot C.

Nature 1990 Feb; 343(6258):555.

- [A 60 kd cdc2-associated polypeptide complexes with the E1A proteins in adenovirus-infected cells.](#)

Giordano A, Whyte P, Harlow E, Franza BR Jr, Beach D, Draetta G.

Cell 1989 Sep; 58(5):981.

Pathway

- [Cell cycle](#)

Disease

- [Adenocarcinoma](#)
- [Esophageal Neoplasms](#)
- [Genetic Predisposition to Disease](#)
- [Kidney Failure](#)
- [Lung Neoplasms](#)
- [Ovarian Neoplasms](#)
- [Pulmonary Disease](#)
- [Urinary Bladder Neoplasms](#)
- [Werner syndrome](#)