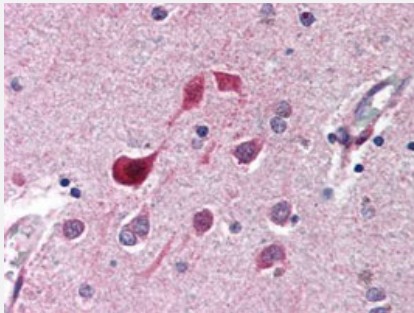


CDK5 polyclonal antibody

Catalog # PAB9990 Size 100 uL

Applications



Immunohistochemistry (Formalin/PFA-fixed paraffin-embedded sections)

Immunohistochemical staining with CDK5 polyclonal antibody (Cat # PAB9990) was diluted 1 : 500 to detect CDK5 in human brain cortex tissue. Tissue was formalin fixed and paraffin embedded. No pre-treatment of sample was required. The image shows the localization of antibody as the precipitated red signal, with a hematoxylin purple nuclear counter stain.

Specification

Product Description	Rabbit polyclonal antibody raised against synthetic peptide of CDK5.
Immunogen	A synthetic peptide (conjugated with KLH) corresponding to C-terminus of human CDK5.
Host	Rabbit
Theoretical MW (kDa)	35
Reactivity	Human, Mouse, Rat
Specificity	Antiserum will specifically react with a 35 KDa cdk5 (p31) protein from human, rat and mouse tissue. Cross reactivity with cdk5 (p31) from other species may also occur.
Form	Liquid
Quality Control Testing	Antibody Reactive Against Synthetic Peptide.
Recommend Usage	ELISA (1:500-1:2000) Western Blot (1:500) The optimal working dilution should be determined by the end user.
Storage Buffer	In antiserum (0.01% sodium azide)

Storage Instruction

Store at 4°C. For long term storage store at -20°C.
Aliquot to avoid repeated freezing and thawing.

Note

This product contains sodium azide: a POISONOUS AND HAZARDOUS SUBSTANCE which should be handled by trained staff only.

Applications

- Western Blot
- Immunohistochemistry (Formalin/PFA-fixed paraffin-embedded sections)

Immunohistochemical staining with CDK5 polyclonal antibody (Cat # PAB9990) was diluted 1 : 500 to detect CDK5 in human brain cortex tissue. Tissue was formalin fixed and paraffin embedded. No pre-treatment of sample was required. The image shows the localization of antibody as the precipitated red signal, with a hematoxylin purple nuclear counter stain.
- Immunoprecipitation
- Enzyme-linked Immunoabsorbent Assay

Gene Info — CDK5

Entrez GeneID[1020](#)**Gene Name**

CDK5

Gene Alias

PSSALRE

Gene Description

cyclin-dependent kinase 5

Omim ID[123831](#)**Gene Ontology**[Hyperlink](#)**Other Designations**

protein kinase CDK5 splicing

Publication Reference

- [Neuronal cdc2-like kinase: a cdc2-related protein kinase with predominantly neuronal expression.](#)

Hellmich MR, Pant HC, Wada E, Battey JF.

PNAS 1992 Nov; 89(22):10867.

- [A family of human cdc2-related protein kinases.](#)

Meyerson M, Enders GH, Wu CL, Su LK, Gorka C, Nelson C, Harlow E, Tsai LH.

The EMBO Journal 1992 Aug; 11(8):2909.

Pathway

- [Axon guidance](#)

Disease

- [Adenocarcinoma](#)
- [Alzheimer disease](#)
- [Cardiovascular Diseases](#)
- [Diabetes Mellitus](#)
- [Edema](#)
- [Esophageal Neoplasms](#)
- [Genetic Predisposition to Disease](#)
- [Kidney Failure](#)
- [Lung Neoplasms](#)
- [Obesity](#)
- [Pulmonary Disease](#)
- [Tobacco Use Disorder](#)
- [Urinary Bladder Neoplasms](#)
- [Werner syndrome](#)