

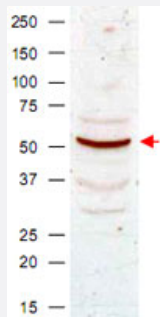
CCNB1 polyclonal antibody

Catalog # PAB9943

Size 100 uL

Applications

Western Blot (Cell lysate)



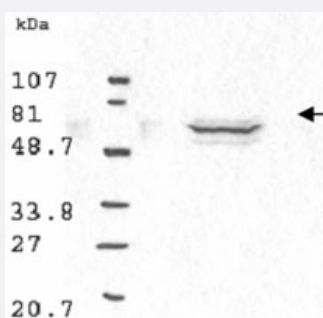
Western blot analysis using CCNB1 polyclonal antibody (Cat # PAB9943) shows detection of CCNB1 present in asynchronous HeLa cell lysates. Comparison to a molecular weight marker indicates a band of ~55 KDa corresponding to human CCNB1 (arrowhead).

Approximately 50 ug of lysate was loaded on to a 7% SDS-PAGE gel for separation.

After transfer to nitrocellulose, the blot was incubated with a 1 : 500 dilution of the antibody for 1 h at room temperature.

Detection occurred using a 1 : 10,000 of HRP conjugated Goat-a-Rabbit IgG. Personal communication, Luca D'Agostino, Temple University, Philadelphia, PA.

Western Blot (Cell lysate)



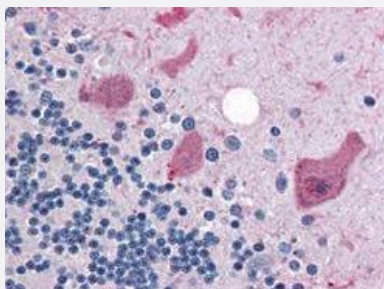
Western blot analysis using CCNB1 polyclonal antibody (Cat # PAB9943) antibody shows detection of human CCNB1 present in asynchronous HN30 cell lysates.

HN30 cells are from head and neck cancer tumors that over express CCNB1 and D1.

Comparison to a molecular weight marker indicates a band of ~62 KDa corresponding to the expected molecular weight for the protein (arrowhead). The blot was incubated with a 1 : 500 dilution of the antibody for 1 h at room temperature.

Detection occurred using a 1 : 10,000 of HRP conjugated Goat-a-Rabbit IgG and chemiluminescence reagent with a 1-min exposure time.

Personal communication, Luca Cote, Temple University, Philadelphia, PA.



Immunohistochemistry (Formalin/PFA-fixed paraffin-embedded sections)

Immunohistochemical staining with CCNB1 polyclonal antibody (Cat # PAB9943) was diluted 1 : 500 to detect CCNB1 in human brain cerebellum tissue.

Tissue was formalin fixed and paraffin embedded.

No pre-treatment of sample was required.

The image shows the localization of antibody as the precipitated red signal, with a hematoxylin purple nuclear counter stain.

Specification

Product Description	Rabbit polyclonal antibody raised against full length recombinant CCNB1.
Immunogen	Recombinant GST fusion protein corresponding to full length human CCNB1.
Host	Rabbit
Reactivity	Human, Mouse, Rat
Form	Liquid
Quality Control Testing	Antibody Reactive Against Recombinant Protein.
Recommend Usage	ELISA (1:2000-1:10000) Western Blot (1:500-1:1000) The optimal working dilution should be determined by the end user.
Storage Buffer	In antiserum (0.01% sodium azide)
Storage Instruction	Store at 4°C. For long term storage store at -20°C. Aliquot to avoid repeated freezing and thawing.
Note	This product contains sodium azide: a POISONOUS AND HAZARDOUS SUBSTANCE which should be handled by trained staff only.

Applications

- Western Blot (Cell lysate)

Western blot analysis using CCNB1 polyclonal antibody (Cat # PAB9943) shows detection of CCNB1 present in asynchronous HeLa cell lysates.

Comparison to a molecular weight marker indicates a band of ~55 KDa corresponding to human CCNB1 (arrowhead).

Approximately 50 ug of lysate was loaded on to a 7% SDS-PAGE gel for separation.

After transfer to nitrocellulose, the blot was incubated with a 1 : 500 dilution of the antibody for 1 h at room temperature.

Detection occurred using a 1 : 10,000 of HRP conjugated Goat-a-Rabbit IgG.

Personal communication, Luca D'Agostino, Temple University, Philadelphia, PA.

- Western Blot (Cell lysate)

Western blot analysis using CCNB1 polyclonal antibody (Cat # PAB9943) antibody shows detection of human CCNB1 present in asynchronous HN30 cell lysates.

HN30 cells are from head and neck cancer tumors that over express CCNB1 and D1.

Comparison to a molecular weight marker indicates a band of ~62 KDa corresponding to the expected molecular weight for the protein (arrowhead).

The blot was incubated with a 1 : 500 dilution of the antibody for 1 h at room temperature.

Detection occurred using a 1 : 10,000 of HRP conjugated Goat-a-Rabbit IgG and chemiluminescence reagent with a 1-min exposure time.

Personal communication, Luca Cote, Temple University, Philadelphia, PA.

- Immunohistochemistry (Formalin/PFA-fixed paraffin-embedded sections)

Immunohistochemical staining with CCNB1 polyclonal antibody (Cat # PAB9943) was diluted 1 : 500 to detect CCNB1 in human brain cerebellum tissue.

Tissue was formalin fixed and paraffin embedded.

No pre-treatment of sample was required.

The image shows the localization of antibody as the precipitated red signal, with a hematoxylin purple nuclear counter stain.

- Immunoprecipitation

- Enzyme-linked Immunoabsorbent Assay

Gene Info — CCNB1

Entrez GeneID

[891](#)

Protein Accession#

[NP_114172:P14635](#)

Gene Name

CCNB1

Gene Alias

CCNB

Gene Description

cyclin B1

Omim ID

[123836](#)

Gene Ontology

[Hyperlink](#)

Gene Summary

The protein encoded by this gene is a regulatory protein involved in mitosis. The gene product complexes with p34(cdc2) to form the maturation-promoting factor (MPF). Two alternative transcripts have been found, a constitutively expressed transcript and a cell cycle-regulated transcript, that is expressed predominantly during G2/M phase. The different transcripts result from the use of alternate transcription initiation sites. [provided by RefSeq]

Other Designations

G2/mitotic-specific cyclin B1

Publication Reference

- [Human cyclin A is adenovirus E1A-associated protein p60 and behaves differently from cyclin B.](#)

Pines J, Hunter T.

Nature 1990 Aug; 346(6286):760.

- [A 60 kd cdc2-associated polypeptide complexes with the E1A proteins in adenovirus-infected cells.](#)

Giordano A, Whyte P, Harlow E, Franza BR Jr, Beach D, Draetta G.

Cell 1989 Sep; 58(5):981.

Pathway

- [Cell cycle](#)
- [p53 signaling pathway](#)

Disease

- [Adenocarcinoma](#)
- [Esophageal Neoplasms](#)
- [Genetic Predisposition to Disease](#)
- [Ovarian Neoplasms](#)