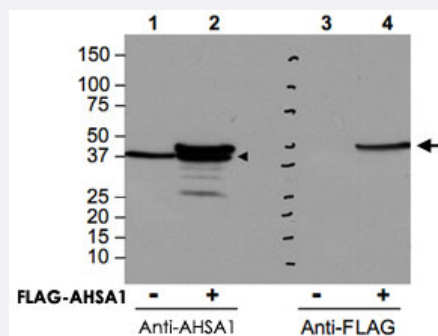


AHSA1 polyclonal antibody

Catalog # PAB9927 Size 100 ug

Applications

Western Blot (Transfected lysate)



Western blot using AHSA1 polyclonal antibody (Cat # PAB9927) shows detection of AHSA1 in COS-7 cells.

For Lanes 2 and 4, COS-7 cells were transfected with pcDNA3-FLAG-AHSA1.

For Lanes 1 and 3, COS-7 cells were not transfected.

Extracts (40 ug per lane) were electrophoresed and transferred to nitrocellulose.

The membrane was probed with anti-AHSA1 (lanes 1 and 2, 1 : 2,000 dilution) or anti-FLAG (lanes 3 and 4).

The lower band seen in anti-AHSA1 blotting (arrowhead) is endogenous AHSA1.

Personal Communication, Brad Scroggins, CCR-NCI, Bethesda, MD.

Specification

Product Description Rabbit polyclonal antibody raised against synthetic peptide of AHSA1.

Immunogen A synthetic peptide corresponding to internal region of human AHSA1.

Host Rabbit

Reactivity Chimpanzee, Human

Form Liquid

Quality Control Testing Antibody Reactive Against Synthetic Peptide.

Recommend Usage ELISA (1:35000-1:185000)
Western Blot (1:500-1:3000)
The optimal working dilution should be determined by the end user.

Storage Buffer In 20 mM KH₂PO₄, 150 mM NaCl, pH 7.2 (0.01% sodium azide)

Storage Instruction

Store at 4°C. For long term storage store at -20°C.
Aliquot to avoid repeated freezing and thawing.

Note

This product contains sodium azide: a POISONOUS AND HAZARDOUS SUBSTANCE which should be handled by trained staff only.

Applications

- Western Blot (Transfected lysate)

Western blot using AHSA1 polyclonal antibody (Cat # PAB9927) shows detection of AHSA1 in COS-7 cells. For Lanes 2 and 4, COS-7 cells were transfected with pcDNA3-FLAG-AHSA1. For Lanes 1 and 3, COS-7 cells were not transfected. Extracts (40 ug per lane) were electrophoresed and transferred to nitrocellulose. The membrane was probed with anti-AHSA1 (lanes 1 and 2, 1 : 2,000 dilution) or anti-FLAG (lanes 3 and 4). The lower band seen in anti-AHSA1 blotting (arrowhead) is endogenous AHSA1. Personal Communication, Brad Scroggins, CCR-NCI, Bethesda, MD.

- Immunohistochemistry

- Enzyme-linked Immunoabsorbent Assay

Gene Info — AHSA1

Entrez GeneID [10598](#)

Gene Name AHSA1

Gene Alias AHA1, C14orf3, p38

Gene Description AHA1, activator of heat shock 90kDa protein ATPase homolog 1 (yeast)

Omim ID [608466](#)

Gene Ontology [Hyperlink](#)

Gene Summary O

Other Designations AHA1, activator of heat shock 90kDa protein ATPase homolog 1

Publication Reference

- [Hsp90 cochaperone Aha1 downregulation rescues misfolding of CFTR in cystic fibrosis.](#)

Wang X, Venable J, LaPointe P, Hutt DM, Koulov AV, Coppinger J, Gurkan C, Kellner W, Matteson J, Plutner H, Riordan JR, Kelly JW, Yates JR 3rd, Balch WE.

Cell 2006 Nov; 127(4):803.

Application: WB, Human, HEK 293 cells

- [Structural basis for recruitment of the ATPase activator Aha1 to the Hsp90 chaperone machinery.](#)

Meyer P, Prodromou C, Liao C, Hu B, Roe SM, Vaughan CK, Vlasic I, Panaretou B, Piper PW, Pearl LH.

The EMBO Journal 2004 Mar; 23(6):1402.

- [Activation of the ATPase activity of hsp90 by the stress-regulated cochaperone aha1.](#)

Panaretou B, Siligardi G, Meyer P, Maloney A, Sullivan JK, Singh S, Millson SH, Clarke PA, Naaby-Hansen S, Stein R, Cramer R, Mollapour M, Workman P, Piper PW, Pearl LH, Prodromou C.

Molecular Cell 2003 Dec; 10(6):1307.

Application: WB-Ce, Human, HT29 cells