

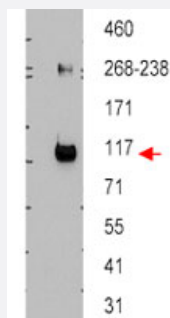
ABCB5 polyclonal antibody

Catalog # PAB9925

Size 100 ug

Applications

Western Blot (Transfected lysate)



Western blot using ABCB5 polyclonal antibody (Cat # PAB9925) shows detection of ABCB5 beta in ~12.5 ug of transfected-Hi5 whole cell lysate. No reaction was seen when antibody was pre-incubated with the immunizing peptide (data not shown).

A 3-8% Tris-acetate gel was used for separation.

The arrowhead corresponds to 117 kDa ABCB5.

The membrane was probed with the primary antibody at a 1 : 10,000 dilution in 5% milk in TBST at 4°C, overnight.

Personal Communication, JP Gillet, CCR-NCI, Bethesda, MD.

Specification

Product Description Rabbit polyclonal antibody raised against synthetic peptide of ABCB5.

Immunogen A synthetic peptide corresponding to internal region of human ABCB5.

Host Rabbit

Reactivity Human

Form Liquid

Quality Control Testing Antibody Reactive Against Synthetic Peptide.

Recommend Usage ELISA (1:80000-1:85000)
Western Blot (1:10000)
The optimal working dilution should be determined by the end user.

Storage Buffer In 20 mM KH₂PO₄, 150 mM NaCl, pH 7.2 (0.01% sodium azide)

Storage Instruction

Store at 4°C. For long term storage store at -20°C.
Aliquot to avoid repeated freezing and thawing.

Note

This product contains sodium azide: a POISONOUS AND HAZARDOUS SUBSTANCE which should be handled by trained staff only.

Applications

- Western Blot (Transfected lysate)

Western blot using ABCB5 polyclonal antibody (Cat # PAB9925) shows detection of ABCB5 beta in ~12.5 ug of transfected-Hi5 whole cell lysate.

No reaction was seen when antibody was pre-incubated with the immunizing peptide (data not shown).

A 3-8% Tris-acetate gel was used for separation.

The arrowhead corresponds to 117 kDa ABCB5.

The membrane was probed with the primary antibody at a 1 : 10,000 dilution in 5% milk in TBST at 4°C, overnight.

Personal Communication, JP Gillet, CCR-NCI, Bethesda, MD.

- Enzyme-linked Immunoabsorbent Assay

Gene Info — ABCB5

Entrez GeneID[340273](#)**Protein Accession#**[AAW31630;Q515Q7](#)**Gene Name**

ABCB5

Gene Alias

ABCB5alpha, ABCB5beta, EST422562

Gene Description

ATP-binding cassette, sub-family B (MDR/TAP), member 5

Gene Ontology[Hyperlink](#)**Gene Summary**

ABCB5 belongs to the ATP-binding cassette (ABC) transporter superfamily of integral membrane proteins. These proteins participate in ATP-dependent transmembrane transport of structurally diverse molecules ranging from small ions, sugars, and peptides to more complex organic molecules (Chen et al., 2005 [PubMed 15760339]).[supplied by OMIM]

Other Designations

ATP-binding cassette protein|ATP-binding cassette, sub-family B, member 5|P-glycoprotein ABCB5

Publication Reference

- [Association between Tumorigenic Potential and the Fate of Cancer Cells in a Syngeneic Melanoma Model.](#)

Krelin Y, Berkovich L, Amit M, Gil Z.

PLoS One 2013 Apr; 8(4):e62124.

Application: WB, Mouse, Human, Melanoma cells

- [ABCB5-mediated doxorubicin transport and chemoresistance in human malignant melanoma.](#)

Frank NY, Margaryan A, Huang Y, Schatton T, Waaga-Gasser AM, Gasser M, Sayegh MH, Sadee W, Frank MH.

Cancer Research 2005 May; 65(10):4320.

Application: Func, IF, IHC, Flow Cyt, Human, Human malignant melanoma sections, G3361 cells

- [Principal expression of two mRNA isoforms \(ABCB 5alpha and ABCB 5beta \) of the ATP-binding cassette transporter gene ABCB 5 in melanoma cells and melanocytes.](#)

Chen KG, Szakacs G, Annereau JP, Rouzaud F, Liang XJ, Valencia JC, Nagineni CN, Hooks JJ, Hearing VJ, Gottesman MM.

Pigment Cell Research 2005 Apr; 18(2):102.

- [Useful tool to generate unidirectional deletion vectors by utilizing the star activity of BamHI in an NcoI-BamHI-XhoI cassette.](#)

Chen KG, Gottesman MM.

BioTechniques 2005 Feb; 38(2):198.

Pathway

- [ABC transporters](#)

Disease

- [Genetic Predisposition to Disease](#)
- [Obesity](#)