

PTENP1 polyclonal antibody

Catalog # PAB9923

Size 100 ug

Applications

Western Blot (Cell lysate)

Western blot using PTENP1 polyclonal antibody (Cat # PAB9923) shows detection of endogenous PTENP1 in whole cell lysates from human derived cell lines HeLa (Lane 4), HEK293 (Lane 5) and MCF-7 (Lane 6).

The band at ~55 KDa (arrowhead) corresponds to PTENP1.

Lanes 1-3 were show the results of staining after the antibody was first pre-incubated with the immunizing peptide.

The identity of lower molecular weight bands in lane 4 is unknown.

Briefly, each lane contains approximately 35 ug of lysate.

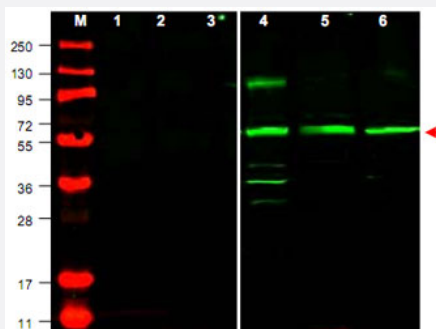
Primary antibody was used at a 1 : 500 dilution in 5% BLOTTO in PBS reacted overnight at 4°C.

The membrane was washed and reacted with a 1 : 10,000 dilution of IRDye800™ conjugated Gt-a-Rabbit IgG [H&L] MX for 45 min at room temperature (800 nm channel, green).

Molecular weight estimation was made by comparison to prestained MW markers in lane M (700 nm channel, red).

IRDye™800 fluorescence image was captured using the Odyssey® Infrared Imaging System developed by LI-COR.

IRDye is a trademark of LI-COR, Inc.



Specification

Product Description	Rabbit polyclonal antibody raised against partial recombinant PTENP1.
Immunogen	Recombinant protein corresponding to N-terminus of human PTENP1.
Host	Rabbit
Reactivity	Chimpanzee, Dog, Human, Macaque, Mouse, Opossum, Pufferfishes, Rat
Form	Liquid

Quality Control Testing	Antibody Reactive Against Recombinant Protein.
Recommend Usage	ELISA (1:160000) Western Blot (1:500-1:2000) The optimal working dilution should be determined by the end user.
Storage Buffer	In 20 mM KH ₂ PO ₄ , 150 mM NaCl, pH 7.2 (0.01% sodium azide)
Storage Instruction	Store at 4°C. For long term storage store at -20°C. Aliquot to avoid repeated freezing and thawing.
Note	This product contains sodium azide: a POISONOUS AND HAZARDOUS SUBSTANCE which should be handled by trained staff only.

Applications

- Western Blot (Cell lysate)

Western blot using PTENP1 polyclonal antibody (Cat # PAB9923) shows detection of endogenous PTENP1 in whole cell lysates from human derived cell lines HeLa (Lane 4), HEK293 (Lane 5) and MCF-7 (Lane 6).

The band at ~55 KDa (arrowhead) corresponds to PTENP1.

Lanes 1-3 were show the results of staining after the antibody was first pre-incubated with the immunizing peptide.

The identity of lower molecular weight bands in lane 4 is unknown.

Briefly, each lane contains approximately 35 ug of lysate.

Primary antibody was used at a 1 : 500 dilution in 5% BLOTTO in PBS reacted overnight at 4°C.

The membrane was washed and reacted with a 1 : 10,000 dilution of IRDye800™ conjugated Gt-a-Rabbit IgG [H&L] MX for 45 min at room temperature (800 nm channel, green).

Molecular weight estimation was made by comparison to prestained MW markers in lane M (700 nm channel, red).

IRDye™800 fluorescence image was captured using the Odyssey® Infrared Imaging System developed by LI-COR.

IRDye is a trademark of LI-COR, Inc.

- Enzyme-linked Immunoabsorbent Assay

Gene Info — PTENP1

Entrez GeneID	11191
Protein Accession#	O43460;NP_000305;AAH38293
Gene Name	PTENP1
Gene Alias	PTEN-rs, PTEN2, PTH2, psiPTEN
Gene Description	phosphatase and tensin homolog pseudogene 1
Gene Ontology	Hyperlink

Publication Reference

- [Lack of PTEN expression in endometrial intraepithelial neoplasia is correlated with cancer progression.](#)

Baak JP, Van Diermen B, Steinbakk A, Janssen E, Skaland I, Mutter GL, Fiane B, Løvslett K.

Human Pathology 2005 May; 36(5):555.

Application: IHC-P, Human, Human endometrioid endometrial adenocarcinoma

- [Epidermal growth factor and hypoxia-induced expression of CXC chemokine receptor 4 on non-small cell lung cancer cells is regulated by the phosphatidylinositol 3-kinase/PTEN/AKT/mammalian target of rapamycin signaling pathway and activation of hypoxia inducible factor-1alpha.](#)

Phillips RJ, Mestas J, Gharaee-Kermani M, Burdick MD, Sica A, Belperio JA, Keane MP, Strieter RM.

The Journal of Biological Chemistry 2005 Jun; 280(23):22473.

- [Alterations of PTEN/MMAC1, a candidate tumor suppressor gene, and its homologue, PTH2, in small cell lung cancer cell lines.](#)

Kim SK, Su LK, Oh Y, Kemp BL, Hong WK, Mao L.

Oncogene 1998 Jan; 16(1):89.