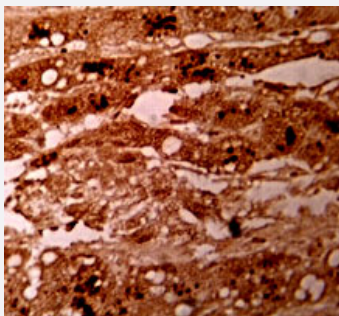


GPC3 polyclonal antibody

Catalog # PAB9896

Size 500 ug

Applications



Immunohistochemistry (Formalin/PFA-fixed paraffin-embedded sections)

Immunohistochemical staining using GPC3 polyclonal antibody at 10 ug/mL on human hepatocellular carcinoma tissue.

Specification

Product Description	Sheep polyclonal antibody raised against partial recombinant GPC3.
Immunogen	Recombinant protein corresponding to C-terminus of human GPC3.
Host	Sheep
Reactivity	Human
Form	Liquid
Quality Control Testing	Antibody Reactive Against Recombinant Protein.
Recommend Usage	Western Blot (5-10 ug/mL) Immunohistochemistry (Formalin/PFA-fixed paraffin-embedded sections) (10 ug/mL) The optimal working dilution should be determined by the end user.
Storage Buffer	In PBS (0.08% sodium azide)
Storage Instruction	Store at -20°C. Aliquot to avoid repeated freezing and thawing.
Note	This product contains sodium azide: a POISONOUS AND HAZARDOUS SUBSTANCE which should be handled by trained staff only.

Applications

- Western Blot
- Immunohistochemistry (Formalin/PFA-fixed paraffin-embedded sections)

Immunohistochemical staining using GPC3 polyclonal antibody at 10 ug/mL on human hepatocellular carcinoma tissue.

Gene Info — GPC3

Entrez GeneID [2719](#)

Gene Name GPC3

Gene Alias DGSX, OCI-5, SDYS, SGB, SGBS, SGBS1

Gene Description glypican 3

Omim ID [194070](#) [300037](#) [312870](#)

Gene Ontology [Hyperlink](#)

Gene Summary Cell surface heparan sulfate proteoglycans are composed of a membrane-associated protein core substituted with a variable number of heparan sulfate chains. Members of the glypican-related integral membrane proteoglycan family (GRIPS) contain a core protein anchored to the cytoplasmic membrane via a glycosyl phosphatidylinositol linkage. These proteins may play a role in the control of cell division and growth regulation. The protein encoded by this gene can bind to and inhibit the dipeptidyl peptidase activity of CD26, and it can induce apoptosis in certain cell types. Deletion mutations in this gene are associated with Simpson-Golabi-Behmel syndrome, also known as Simpson dysmorphism syndrome. Alternative splicing results in multiple transcript variants. [provided by RefSeq]

Other Designations OTTHUMP00000024058|OTTHUMP00000062492|glypican proteoglycan 3

Publication Reference

- [Value of glypican 3 immunostaining in the diagnosis of hepatocellular carcinoma on needle biopsy.](#)

Anatelli F, Chuang ST, Yang XJ, Wang HL.

American Journal of Clinical Pathology 2008 Aug; 130(2):219.

Application: IHC-P, Human, Human hepatocellular carcinoma

- [Expression of glypican 3 in ovarian and extragonadal germ cell tumors.](#)

Zynger DL, Everton MJ, Dimov ND, Chou PM, Yang XJ.

American Journal of Clinical Pathology 2008 Aug; 130(2):224.

Application: IHC-P, Human, Human extragonadal germ cell cancer, ovarian cancer

- [Sulfatase 2 up-regulates glypican 3, promotes fibroblast growth factor signaling, and decreases survival in hepatocellular carcinoma.](#)

Lai JP, Sandhu DS, Yu C, Han T, Moser CD, Jackson KK, Guerrero RB, Aderca I, Isomoto H, Garrity-Park MM, Zou H, Shire AM, Nagorney DM, Sanderson SO, Adjei AA, Lee JS, Thorgeirsson SS, Roberts LR.

Nature 2008 Apr; 47(4):1211.

Application: IF, IHC-P, WB, Human, Hep-3B, Huh7 cells, Mouse tumor