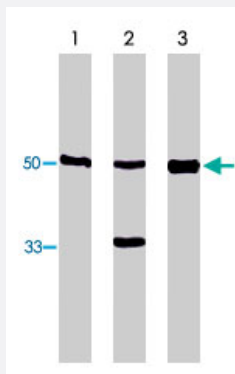


# Fli1 polyclonal antibody

Catalog # PAB9876

Size 250 ug

## Applications



### Western Blot (Cell lysate)

Western blot analysis using Fli1 polyclonal antibody on Jurkat (lane 1), DP16-1 (lane 2) and CB7 (lane 3).

## Specification

|                                |  |
|--------------------------------|--|
| <b>Product Description</b>     | Sheep polyclonal antibody raised against partial recombinant Fli1.   |
| <b>Immunogen</b>               | Recombinant GST fusion protein corresponding to amino acids 1-239 of mouse Fli1.                                       |
| <b>Host</b>                    | Sheep  |
| <b>Reactivity</b>              | Human, Mouse   |
| <b>Form</b>                    | Liquid   |
| <b>Quality Control Testing</b> | Antibody Reactive Against Recombinant Protein.   |
| <b>Recommend Usage</b>         | Western Blot (1:500)<br>The optimal working dilution should be determined by the end user.                             |
| <b>Storage Buffer</b>          | In PBS (0.08% sodium azide)  |
| <b>Storage Instruction</b>     | Store at -20°C.<br>Aliquot to avoid repeated freezing and thawing.   |
| <b>Note</b>                    | This product contains sodium azide: a POISONOUS AND HAZARDOUS SUBSTANCE which should be handled by trained staff only. |

## Applications

- Western Blot (Cell lysate)

Western blot analysis using Fli1 polyclonal antibody on Jurkat (lane 1), DP16-1 (lane 2) and CB7 (lane 3).

## Gene Info — Fli1

|               |                       |
|---------------|-----------------------|
| Entrez GeneID | <a href="#">14247</a> |
|---------------|-----------------------|

|           |      |
|-----------|------|
| Gene Name | Fli1 |
|-----------|------|

|            |                           |
|------------|---------------------------|
| Gene Alias | EWSR2, Fli-1, SIC-1, Sic1 |
|------------|---------------------------|

|                  |                               |
|------------------|-------------------------------|
| Gene Description | Friend leukemia integration 1 |
|------------------|-------------------------------|

|               |                           |
|---------------|---------------------------|
| Gene Ontology | <a href="#">Hyperlink</a> |
|---------------|---------------------------|

|                    |   |
|--------------------|---|
| Other Designations | - |
|--------------------|---|