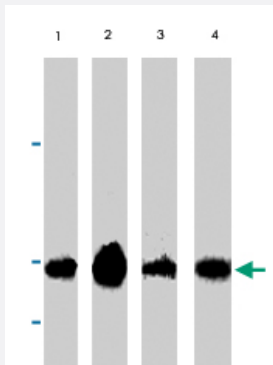


Cytochrome c polyclonal antibody

Catalog # PAB9852 Size 100 ug

Applications



Western Blot

Western blot analysis using Cytochrome c polyclonal antibody on Jurkat Cells (lane 1, 2 ug) and Rat Cells (lane 2, 2 ug).

Specification

Product Description	Sheep polyclonal antibody raised against full length recombinant Cytochrome c.
Immunogen	Recombinant protein corresponding to full length Cytochrome c.
Host	Sheep
Reactivity	Dog, Human, Rabbit, Rat
Form	Liquid
Quality Control Testing	Antibody Reactive Against Recombinant Protein.
Recommend Usage	Western Blot (1:5000) The optimal working dilution should be determined by the end user.
Storage Buffer	In PBS (0.08% sodium azide)
Storage Instruction	Store at -20°C. Aliquot to avoid repeated freezing and thawing.
Note	This product contains sodium azide: a POISONOUS AND HAZARDOUS SUBSTANCE which should be handled by trained staff only.

Applications

- Western Blot

Western blot analysis using Cytochrome c polyclonal antibody on Jurkat Cells (lane 1, 2 ug) and Rat Cells (lane 2, 2 ug).

- Immunofluorescence

- Immunoprecipitation