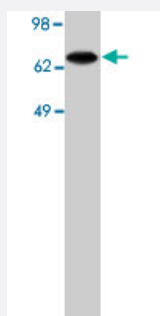


COL4A3BP polyclonal antibody

Catalog # PAB9837

Size 100 ug

Applications



Western Blot (Cell lysate)

Western blot using COL4A3BP polyclonal antibody on HT-29 cell lysate (28 ug/lane).

Specification

Product Description	Rabbit polyclonal antibody raised against synthetic peptide of COL4A3BP.
Immunogen	A synthetic peptide corresponding to human COL4A3BP.
Host	Rabbit
Reactivity	Human
Form	Liquid
Quality Control Testing	Antibody Reactive Against Synthetic Peptide.
Recommend Usage	Western Blot (5-10 ug/mL) The optimal working dilution should be determined by the end user.
Storage Buffer	In PBS (0.08% sodium azide)
Storage Instruction	Store at -20°C. Aliquot to avoid repeated freezing and thawing.
Note	This product contains sodium azide: a POISONOUS AND HAZARDOUS SUBSTANCE which should be handled by trained staff only.

Applications

- Western Blot (Cell lysate)

Western blot using COL4A3BP polyclonal antibody on HT-29 cell lysate (28 ug/lane).

Gene Info — COL4A3BP

Entrez GeneID [10087](#)

Gene Name COL4A3BP

Gene Alias CERT, CERTL, FLJ20597, GPBP, STARD11

Gene Description collagen, type IV, alpha 3 (Goodpasture antigen) binding protein

Omim ID [604677](#)

Gene Ontology [Hyperlink](#)

Gene Summary This gene encodes a kinase that specifically phosphorylates the N-terminal region of the non-collagenous domain of the alpha 3 chain of type IV collagen, known as the Goodpasture antigen. Good pasture disease is the result of an autoimmune response directed at this antigen. One isoform of this protein is also involved in ceramide intracellular transport. Three transcript variants encoding different isoforms have been found for this gene. [provided by RefSeq]

Other Designations Goodpasture antigen-binding protein|OTTHUMP00000128248|OTTHUMP00000128249|START domain containing 11|StAR-related lipid transfer (START) domain containing 11|alpha 3 type IV collagen binding protein|ceramide transporter|lipid-transfer protein CERTL

Publication Reference

- [Global, in vivo, and site-specific phosphorylation dynamics in signaling networks.](#)

Olsen JV, Blagoev B, Gnäd F, Macek B, Kumar C, Mortensen P, Mann M.
Cell 2006 Nov; 127(3):635.

- [Molecular machinery for non-vesicular trafficking of ceramide.](#)

Hanada K, Kumagai K, Yasuda S, Miura Y, Kawano M, Fukasawa M, Nishijima M.
Nature 2003 Dec; 426(6968):803.

- [Goodpasture antigen-binding protein, the kinase that phosphorylates the goodpasture antigen, is an alternatively spliced variant implicated in autoimmune pathogenesis.](#)

Raya A, Revert-Ros F, Martinez-Martinez P, Navarro S, Rosello E, Vieites B, Granero F, Forteza J, Saus J.

The Journal of Biological Chemistry 2000 Dec; 275(51):40392.

Application: IHC-P, WB, Human, Bovine, Mouse, Muscle, Renal, Skin