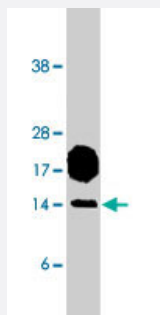


CSAG2 polyclonal antibody

Catalog # PAB9743

Size 100 ug

Applications



Western Blot (Cell lysate)

Western blot analysis of CSAG2 expression in Jurkat cell lysate (10 ug/lane) with CSAG2 polyclonal antibody (0.5 ug/mL).

Specification

Product Description Rabbit polyclonal antibody raised against synthetic peptide of CSAG2.

Immunogen A synthetic peptide corresponding to human CSAG2.

Host Rabbit

Reactivity Human

Form Liquid

Quality Control Testing Antibody Reactive Against Synthetic Peptide.

Recommend Usage The optimal working dilution should be determined by the end user.

Storage Buffer In PBS (0.08% sodium azide)

Storage Instruction Store at -20°C.
Aliquot to avoid repeated freezing and thawing.

Note This product contains sodium azide: a POISONOUS AND HAZARDOUS SUBSTANCE which should be handled by trained staff only.

Applications

- Western Blot (Cell lysate)

Western blot analysis of CSAG2 expression in Jurkat cell lysate (10 ug/lane) with CSAG2 polyclonal antibody (0.5 ug/mL).

- Enzyme-linked Immunoabsorbent Assay

Gene Info — CSAG2

Entrez GeneID [728461](#)

Gene Name CSAG2

Gene Alias CSAG3B, MGC149851, MGC149852, TRAG3

Gene Description CSAG family, member 2

Gene Ontology [Hyperlink](#)

Gene Summary O

Other Designations CSAG family, member 3B|taxol resistance associated gene 3

Publication Reference

- [Spontaneous CD4+ T cell responses against TRAG-3 in patients with melanoma and breast cancers.](#)

Janjic B, Andrade P, Wang XF, Fourcade J, Almunia C, Kudela P, Brufsky A, Jacobs S, Friedland D, Stoller R, Gillet D, Herberman RB, Kirkwood JM, Maillere B, Zarour HM.

Journal of Immunology 2006 Aug; 177(4):2717.

Application: ELISA, Human, Seum from patients with Breast cancer, Lung cancer, Melanoma

- [Expression of the TRAG-3 gene in human esophageal cancer: the frequent synchronous expression of MAGE-3 gene.](#)

Ohta M, Tanaka F, Sadanaga N, Yamaguchi H, Inoue H, Mori M.

Oncology Reports 2006 Jun; 15(6):1529.

- [Systematic search for gastric cancer-specific genes based on SAGE data: melanoma inhibitory activity and matrix metalloproteinase-10 are novel prognostic factors in patients with gastric cancer.](#)

Aung PP, Oue N, Mitani Y, Nakayama H, Yoshida K, Noguchi T, Bosserhoff AK, Yasui W.

Oncogene 2006 Apr; 25(17):2546.